



Den skånska flernivådemokratin

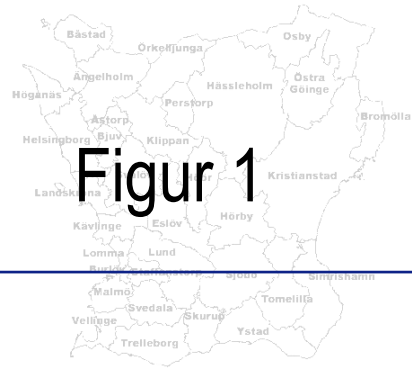
Lennart Nilsson

Centrum för forskning om offentlig sektor (CEFOS)
Göteborgs universitet



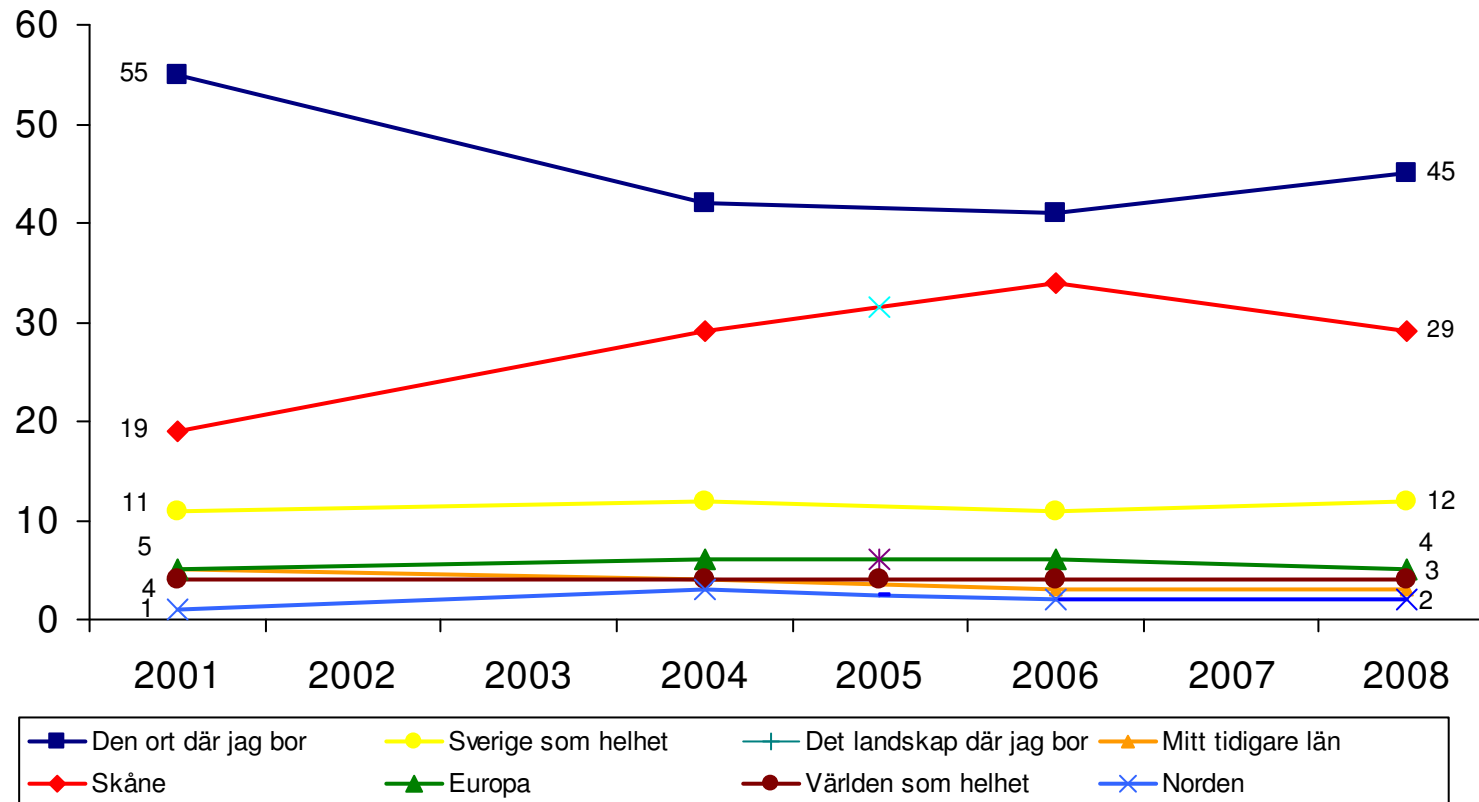
GÖTEBORGS
UNIVERSITET

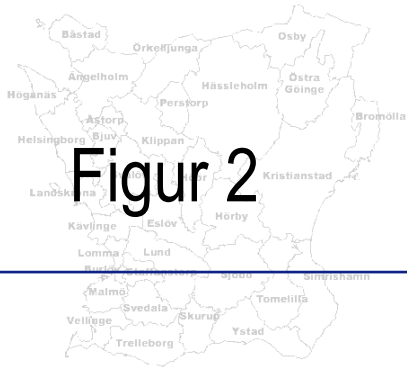
SOM-INSTITUTET
samhälle opinion massmedia
GÖTEBORGS UNIVERSITET



Figur 1

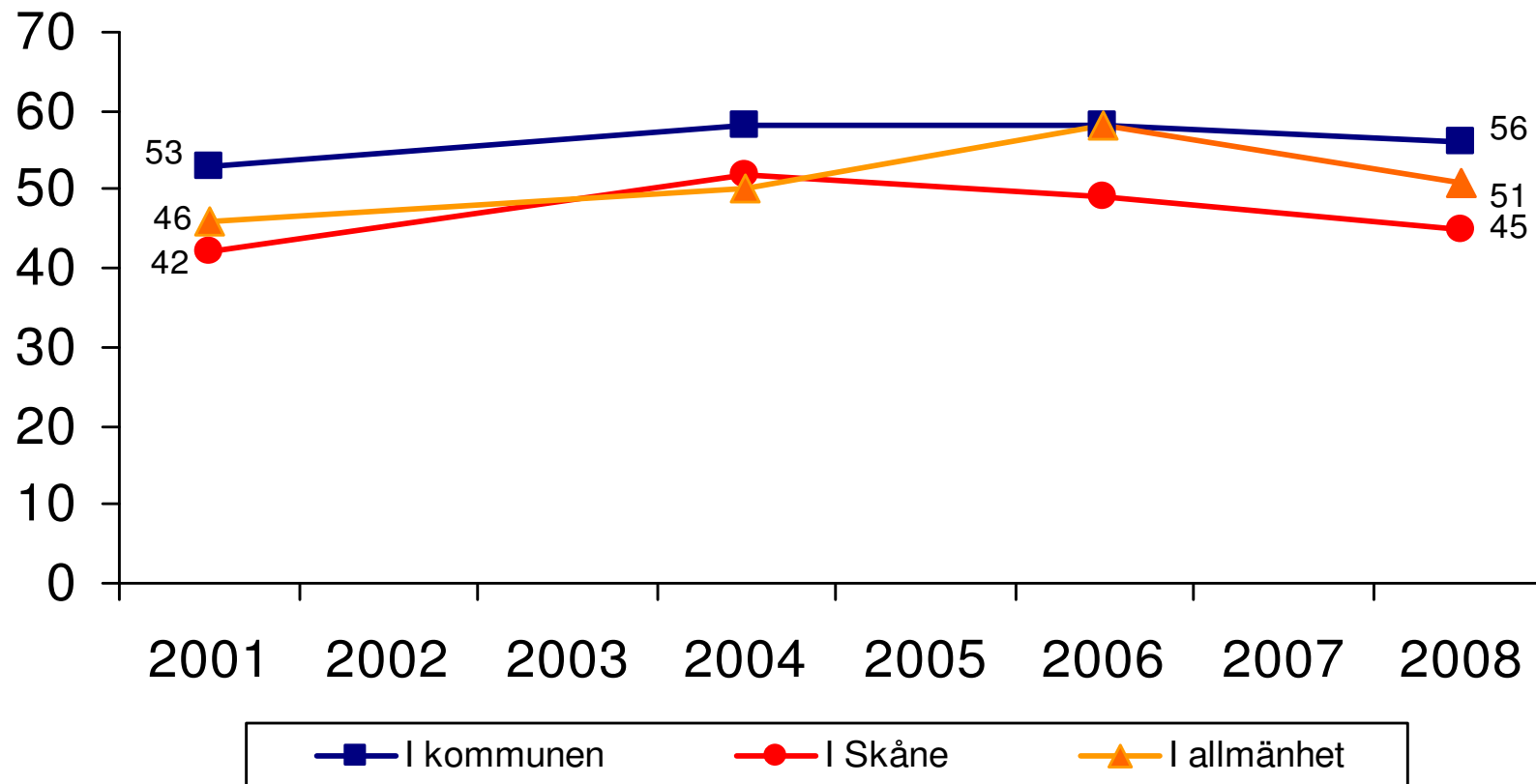
Upplevd geografisk hemhörighet (procent)

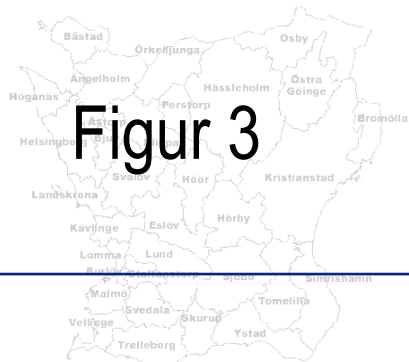




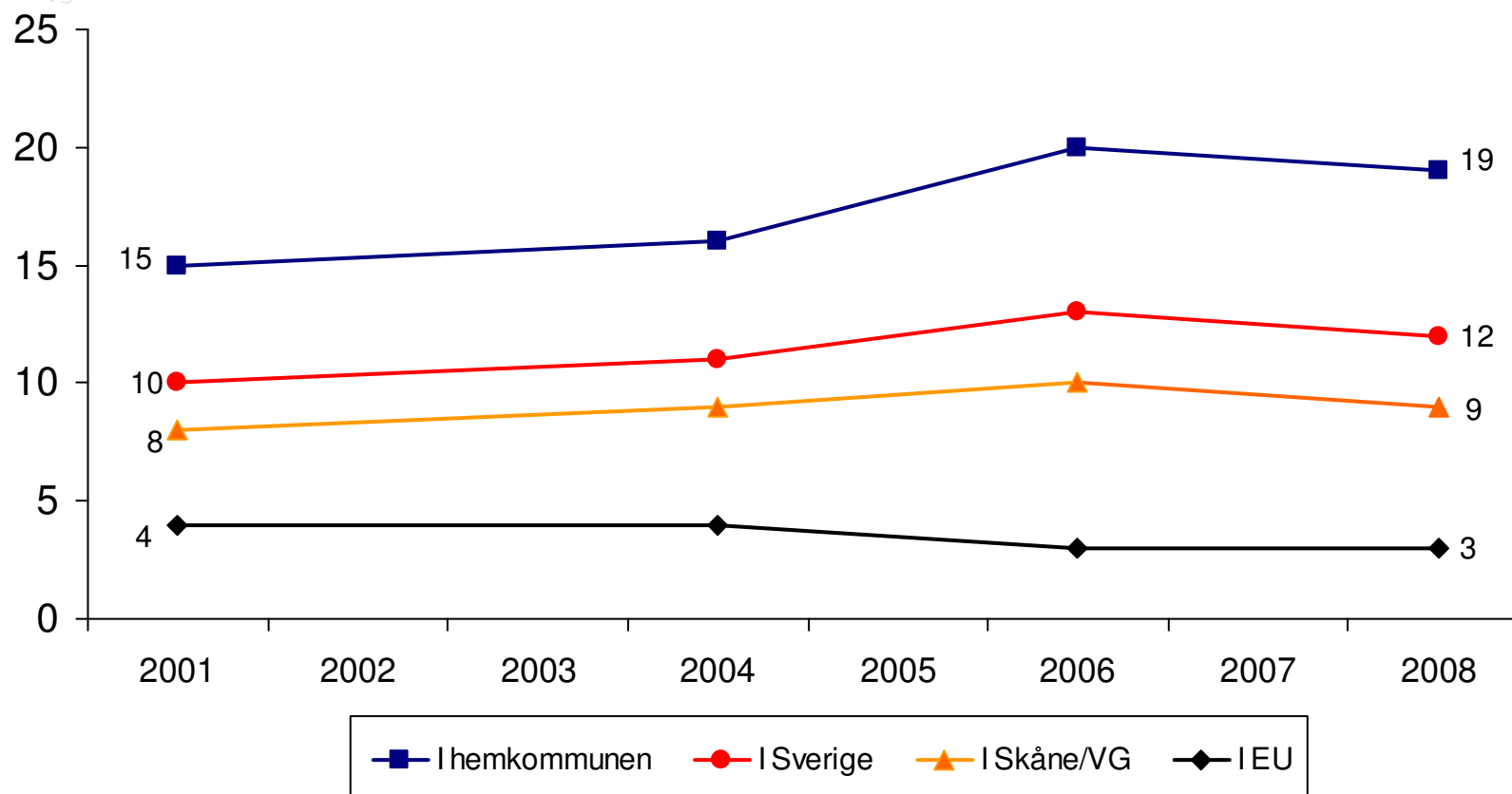
Figur 2

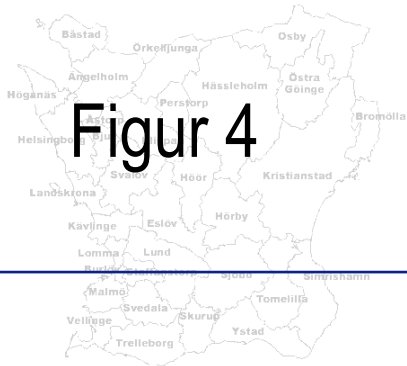
Intresse för politik (procent)





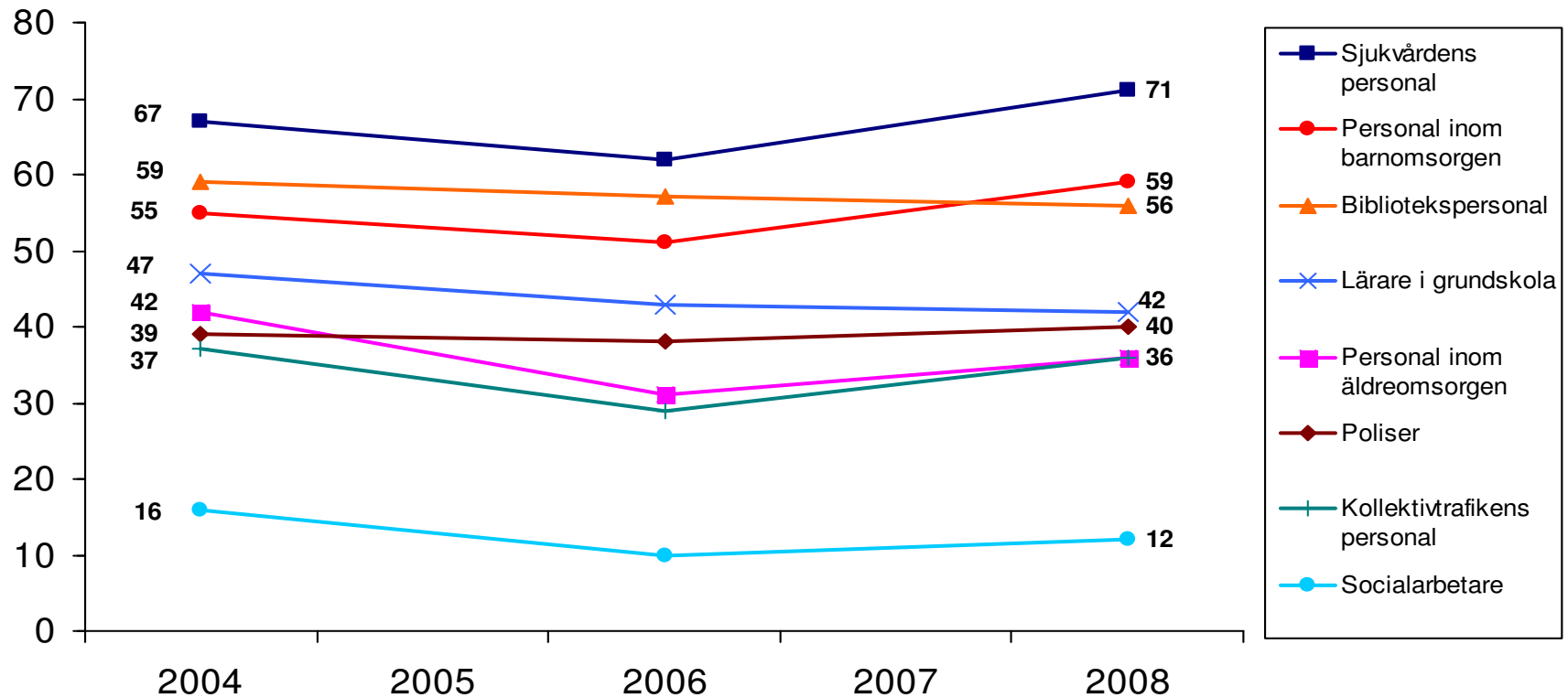
Figur 3 Andel som anser sig ha goda möjligheter att påverka (procent)

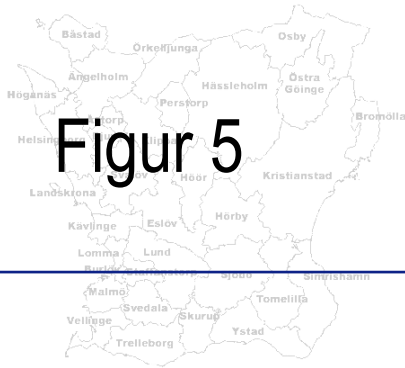




Figur 4

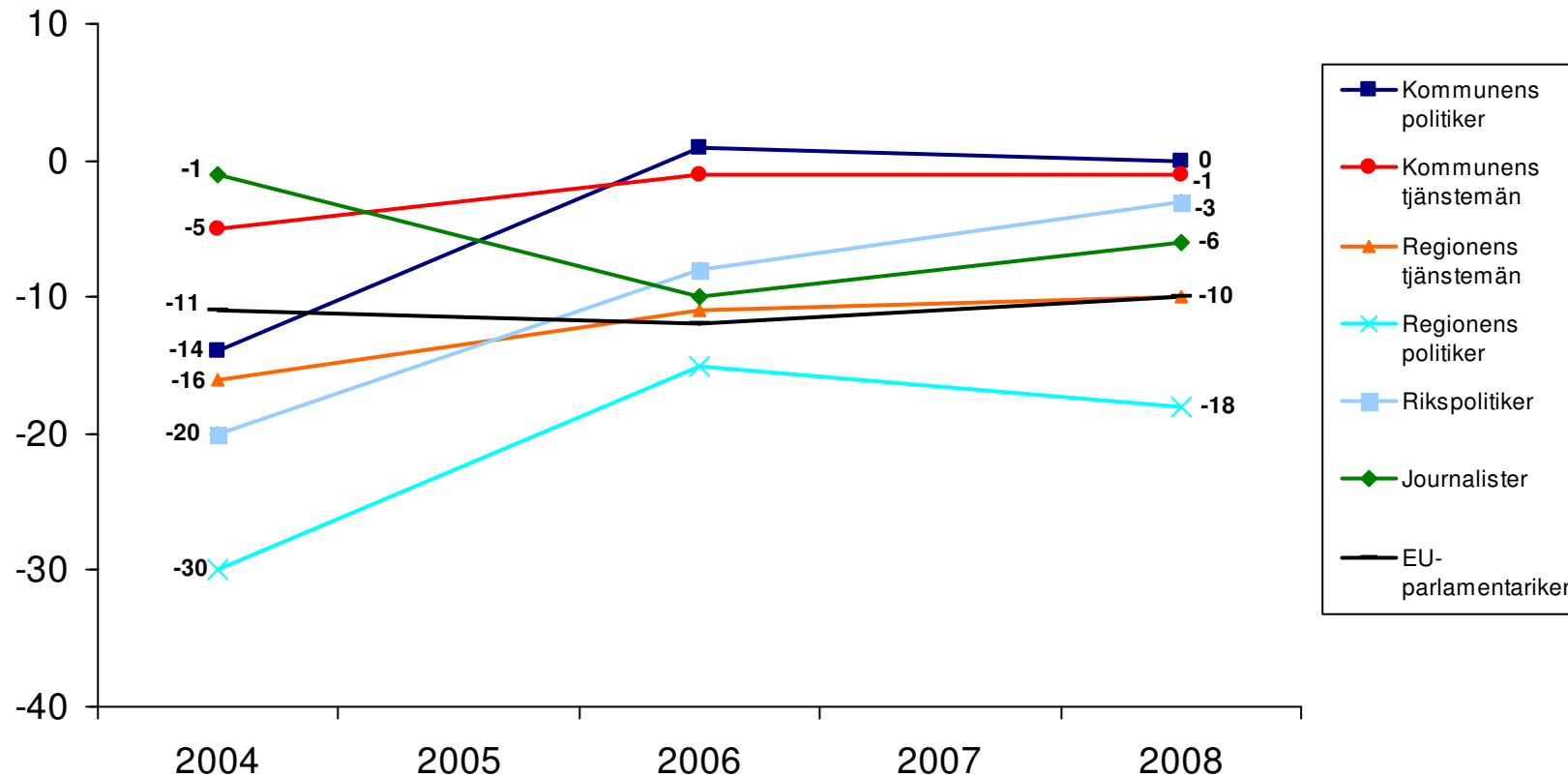
Förtroende för yrkesgrupper 2004-2008 (balansmått)

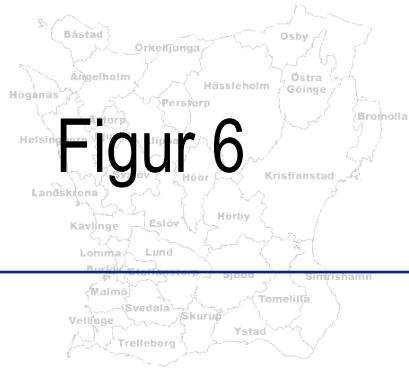




Figur 5

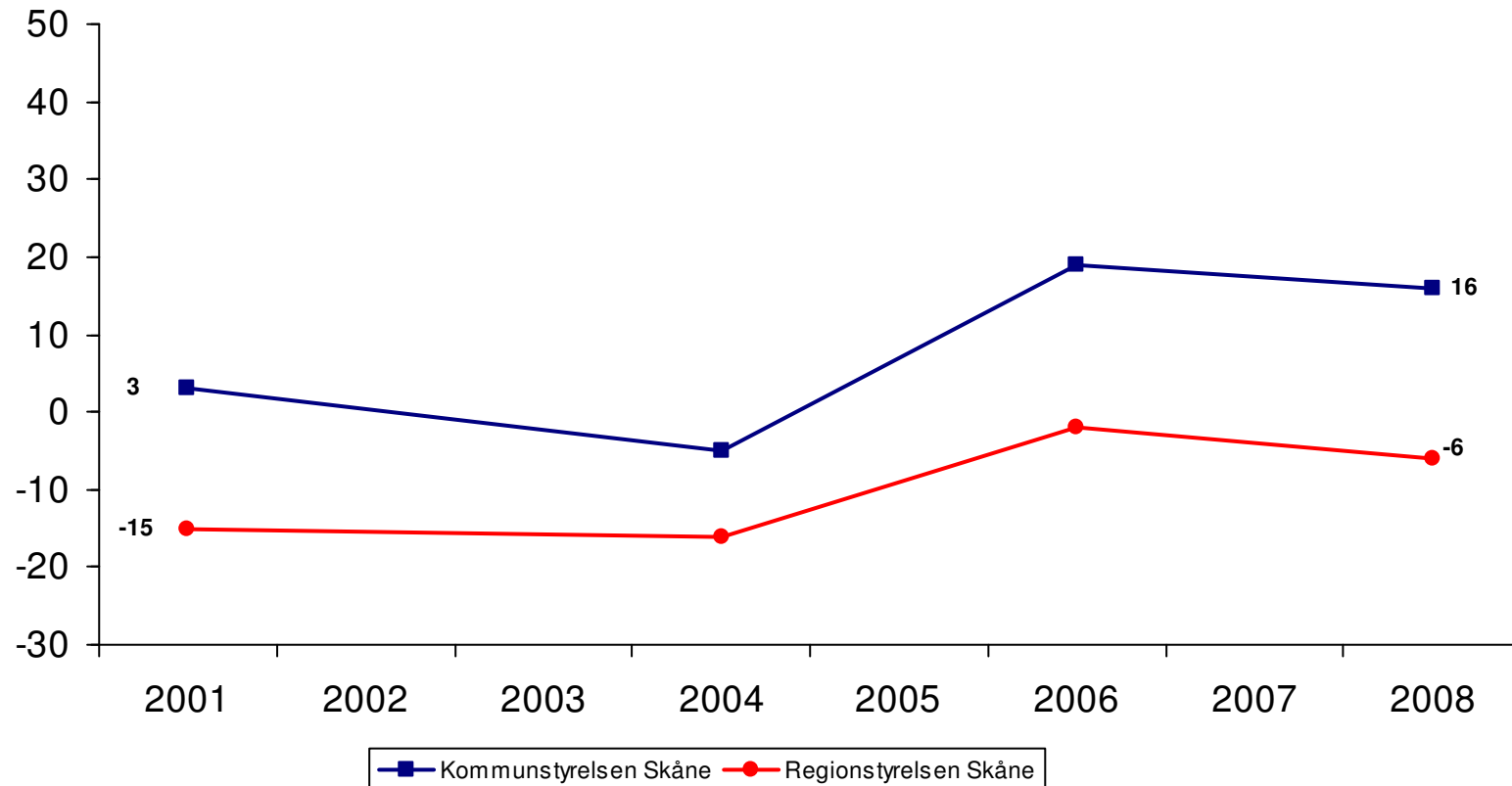
Förtroende för politiker, tjänstemän och journalister (balansmått)

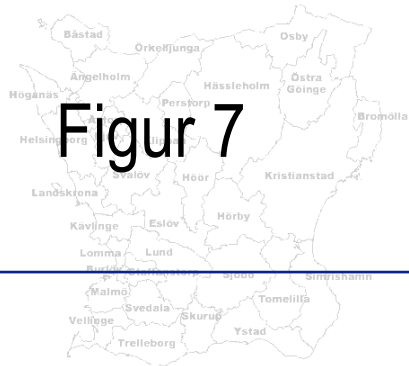




Figur 6

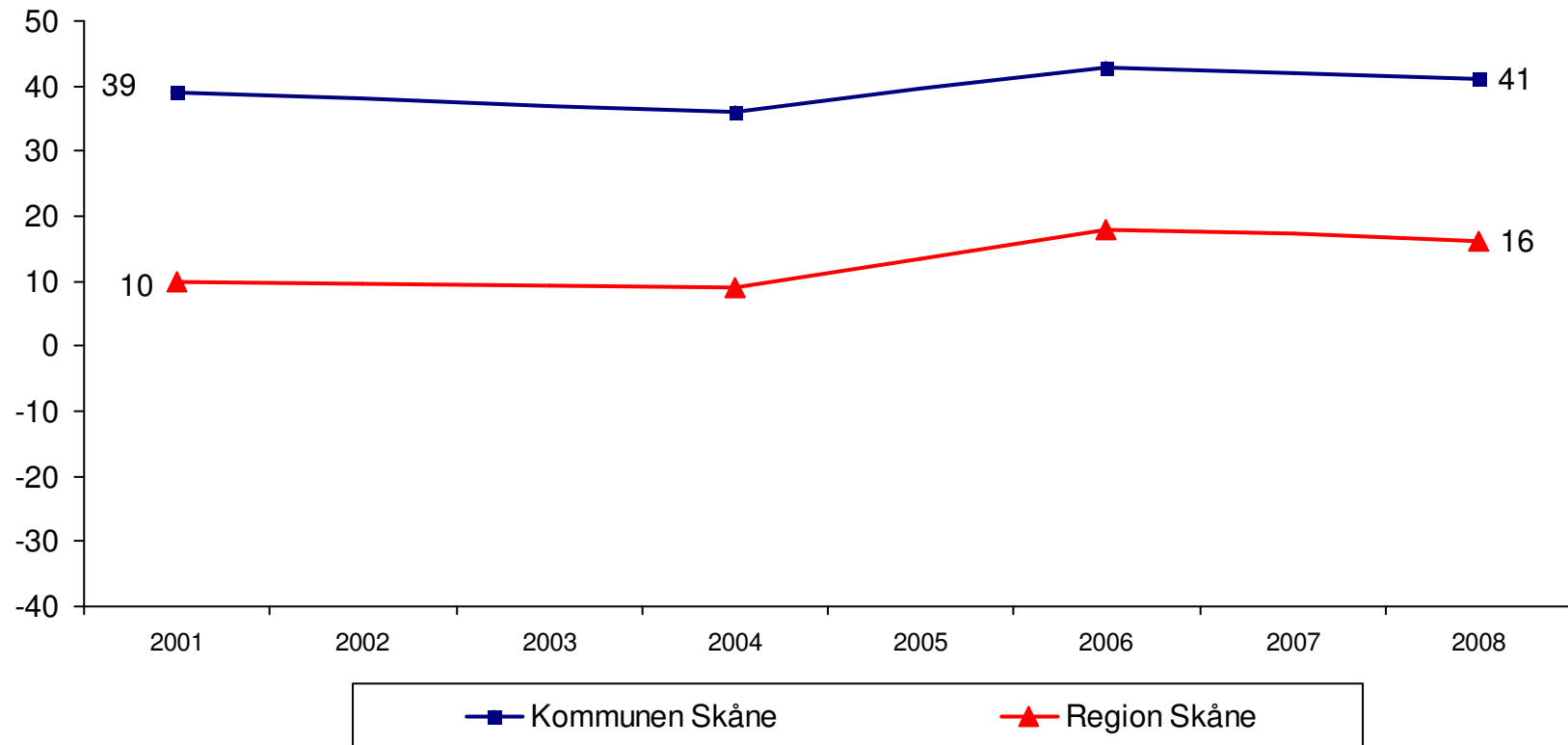
Hur kommunen och regionstyrelsen sköter sitt arbete (balansmått)

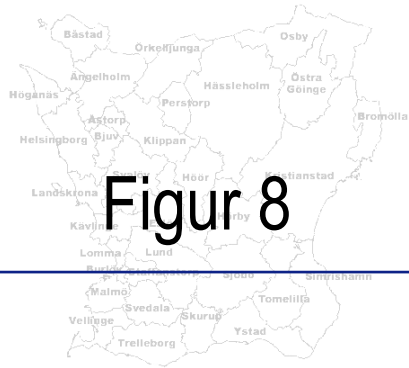




Figur 7

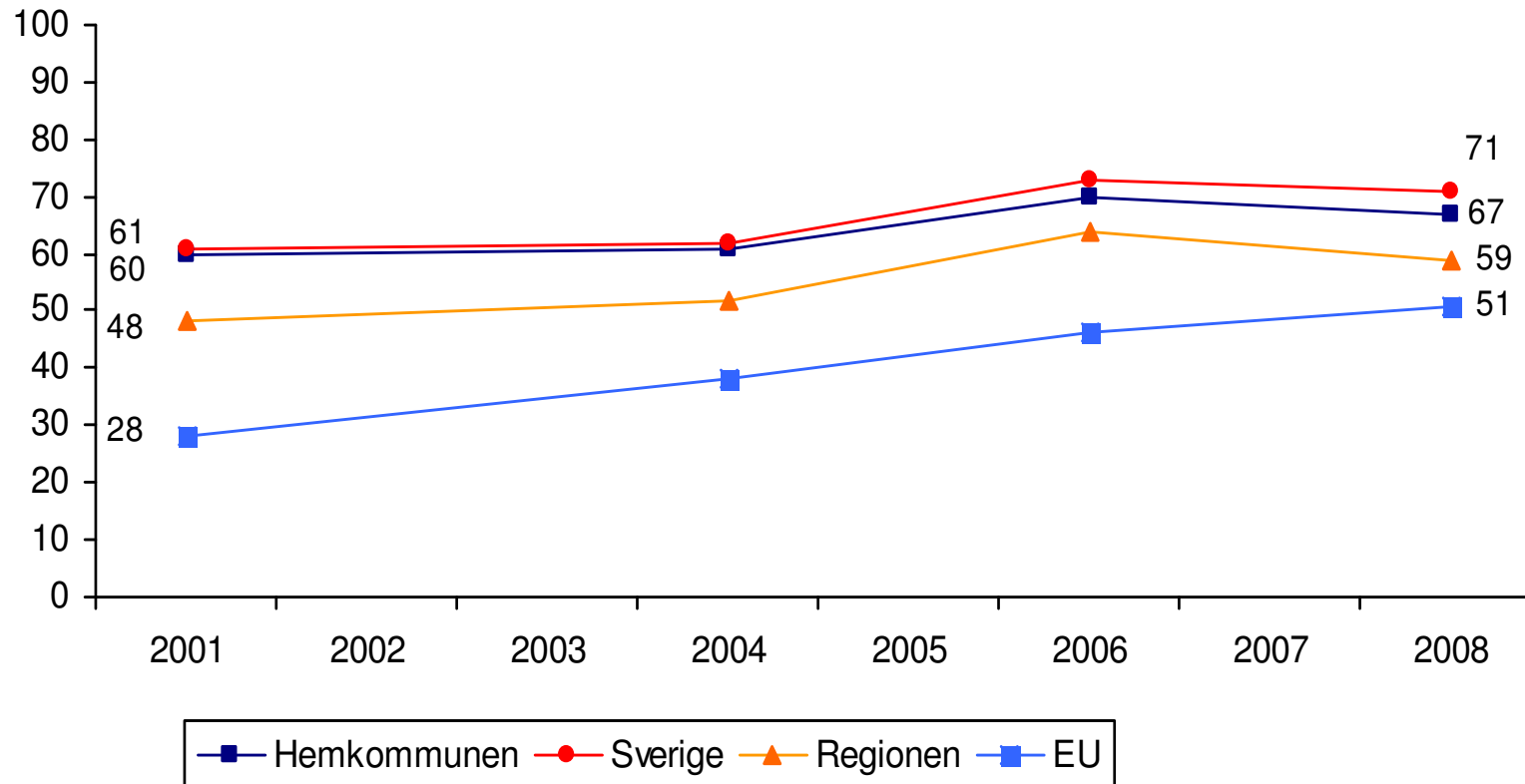
Bedömning av servicen som helhet i kommunen respektive i Skåne (balansmått)

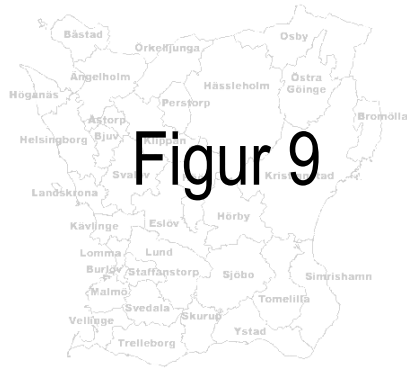




Figur 8

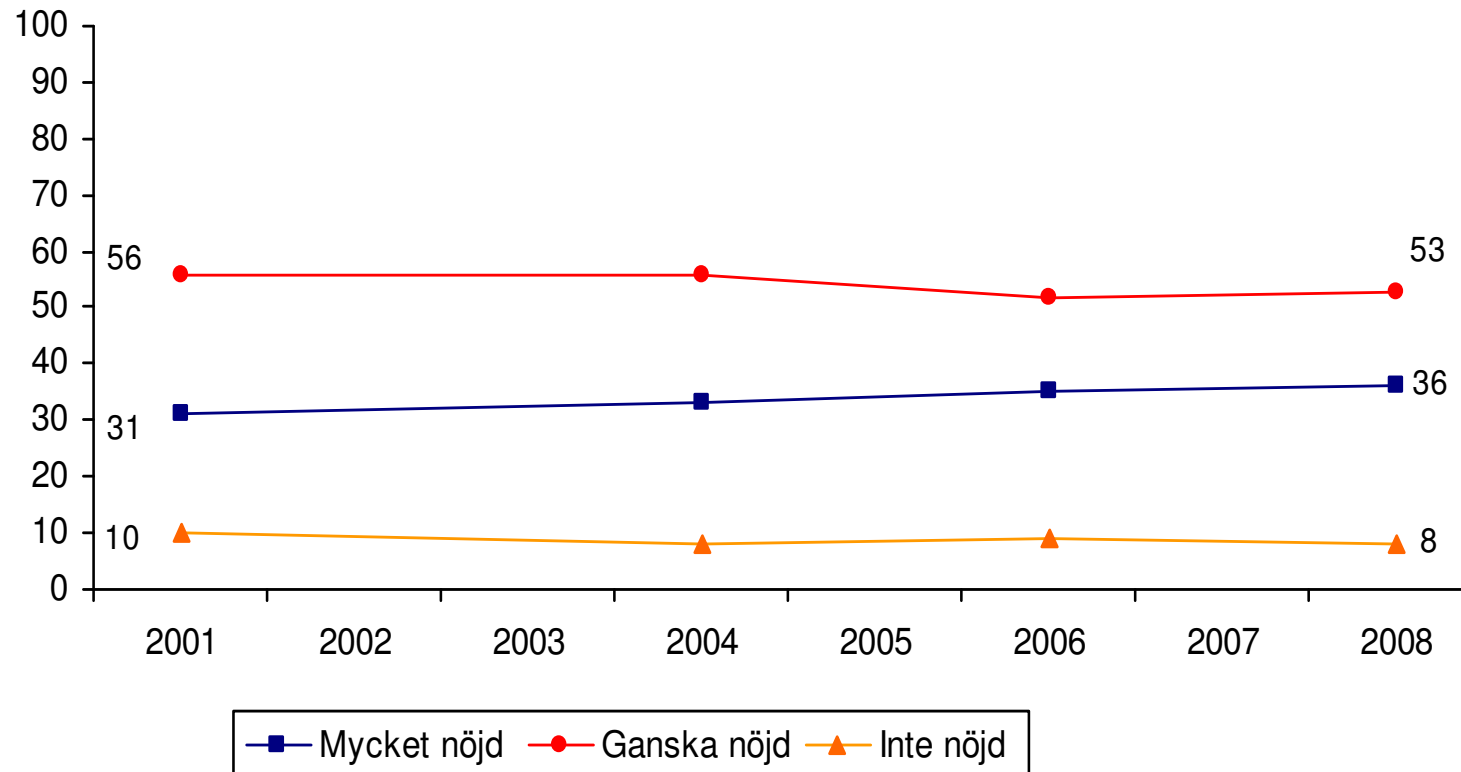
Nöjd med demokratin på olika nivåer (procent)

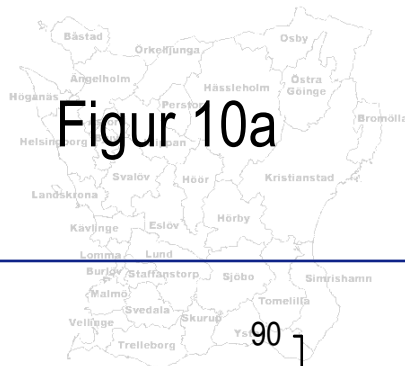




Figur 9

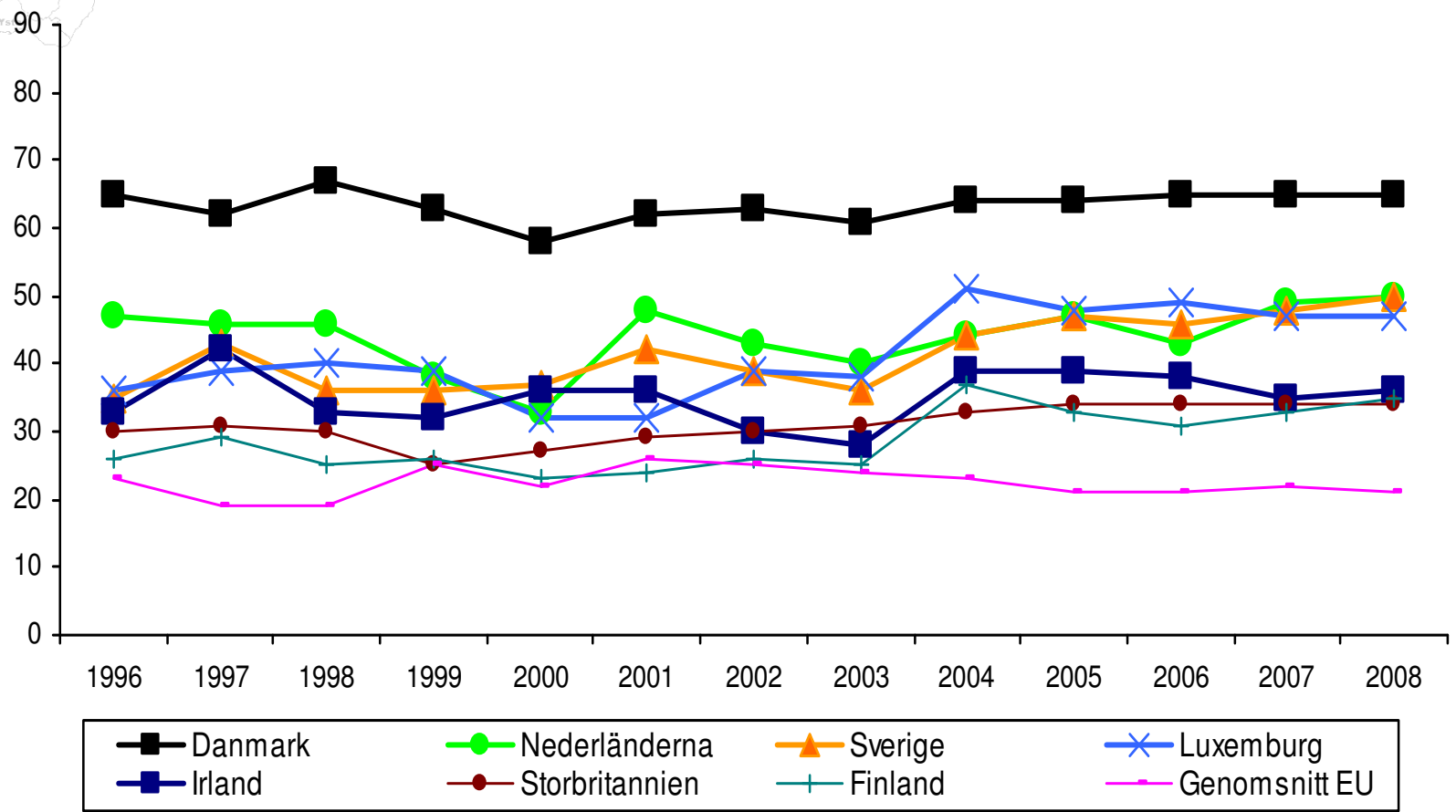
Allmän livstillfredsställelse i Skåne 2001 - 2008 (procent)

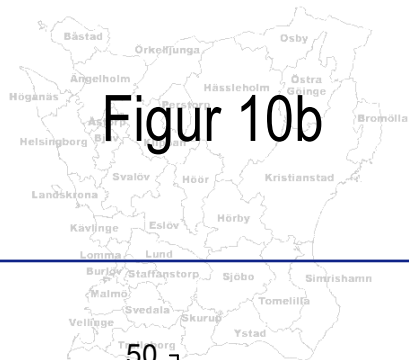




Figur 10a

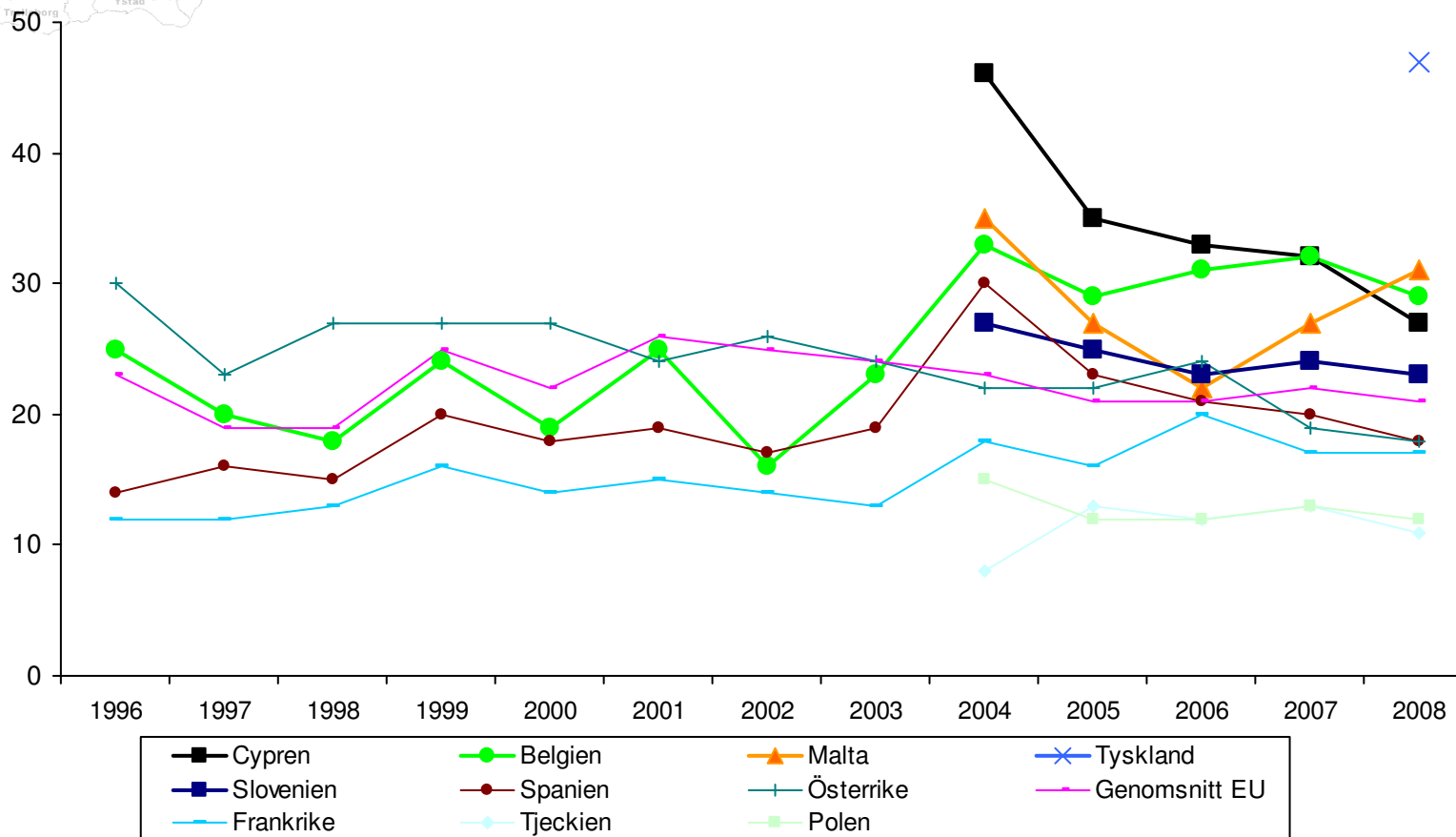
Allmän livstillfredsställelse i EU-länderna 1996-2008 (procent)

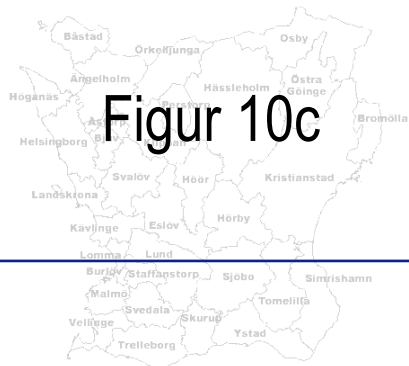




Figur 10b

Allmän livstillfredsställelse i EU-länderna 1996-2008 (procent)





Figur 10c

Allmän livstillfredsställelse i EU-länderna 1996-2008 (procent)

