

SOM Report no 2009:8

S O M

Swedish Opinion
on the
Swedish Membership
in the
European Union
1994–2008

Sören Holmberg

March 2009

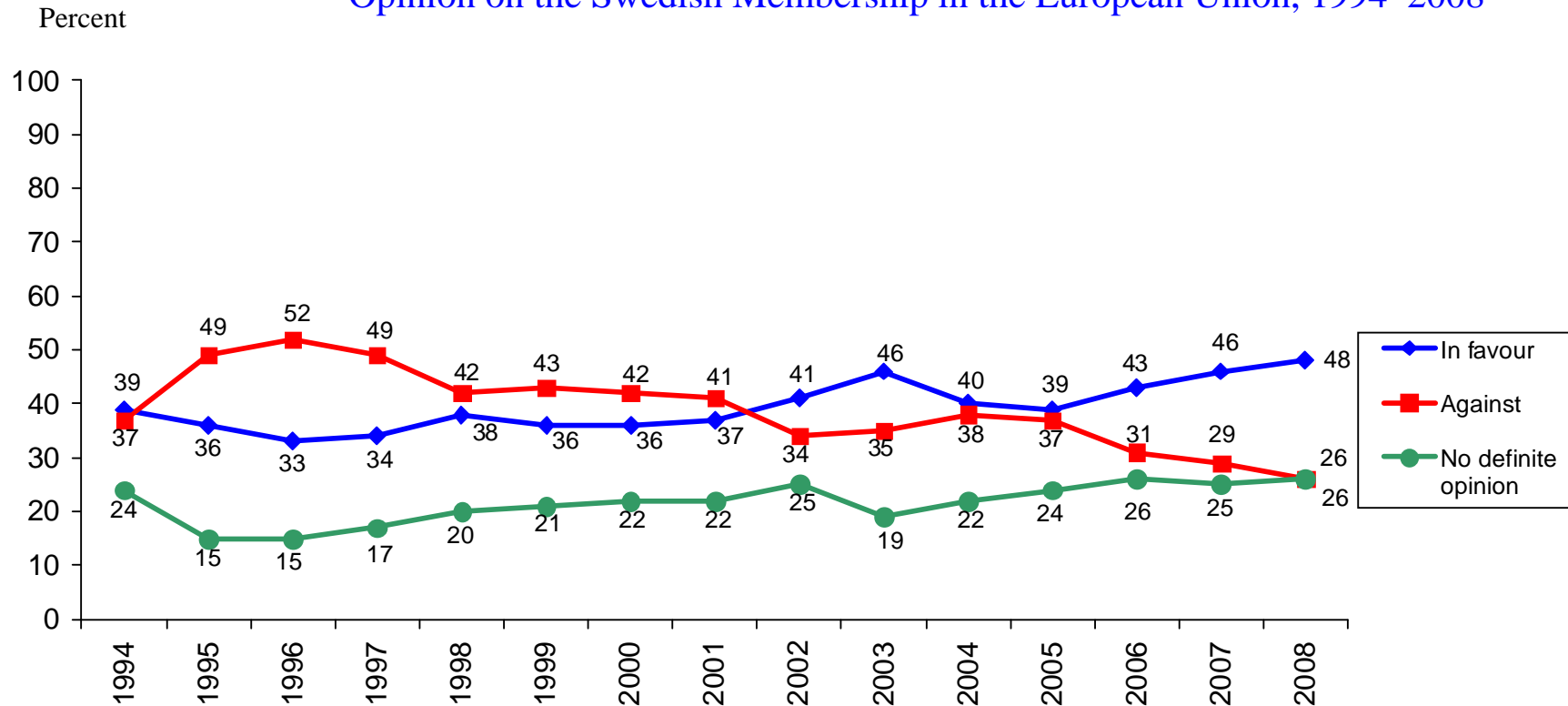
SOM INSTITUTE
society opinion media



UNIVERSITY OF GOTHENBURG

society opinion media society opinion media

Opinion on the Swedish Membership in the European Union, 1994–2008

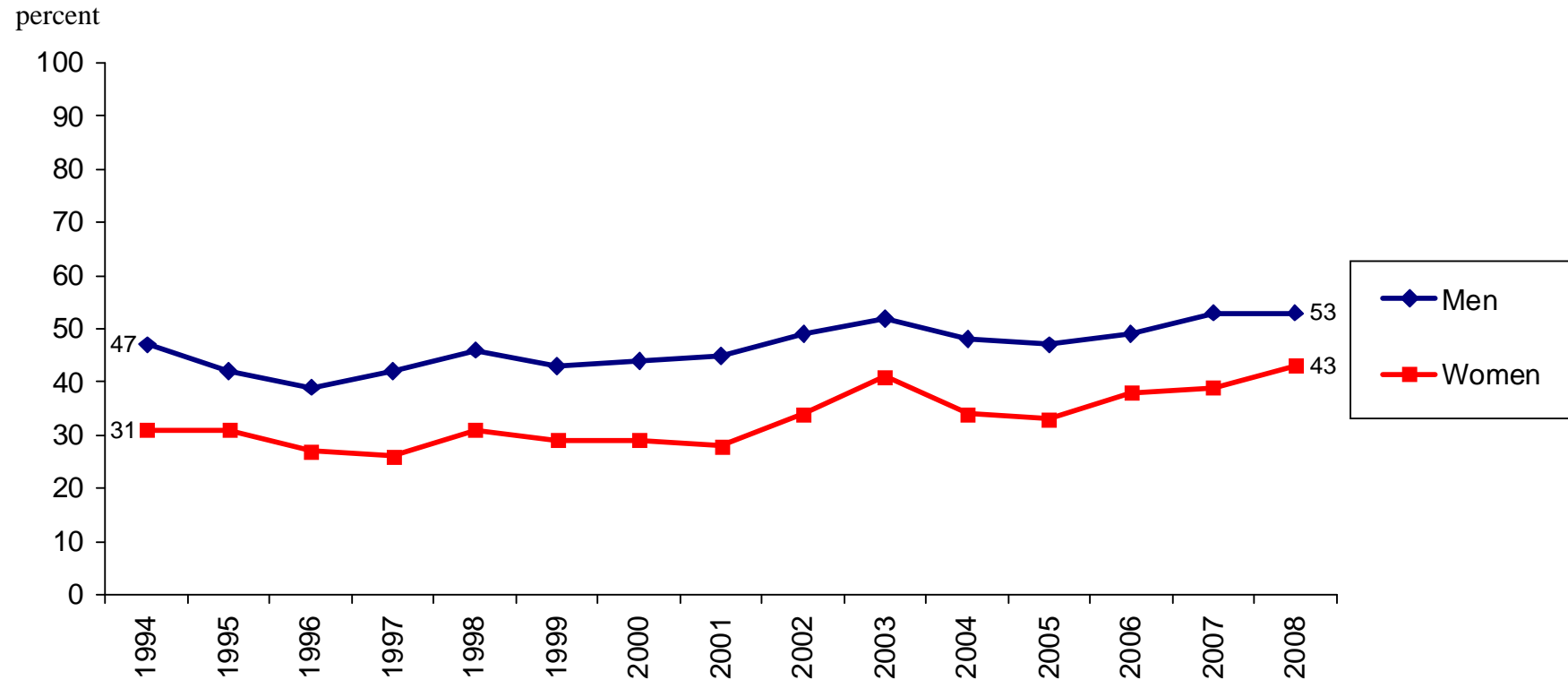


Data: The SOM Institute, University of Gothenburg; Annual nationwide surveys in Sweden; Sample size: 6 000; age: 15–85 years old; Mail questionnaires with an average response rate of 65 percent. **Question:** "What is your opinion of the Swedish membership in the European Union?" Three response alternatives: "On the whole in favour; On the whole against; No definite opinion."

Comment: All respondents answering the question are included in the percentage base.

Principal investigator: Sören Holmberg, phone +46 31 786 12 27, e-mail: soren.holmberg@pol.gu.se. Data processed by Jonas Ohlsson, the SOM Institute.

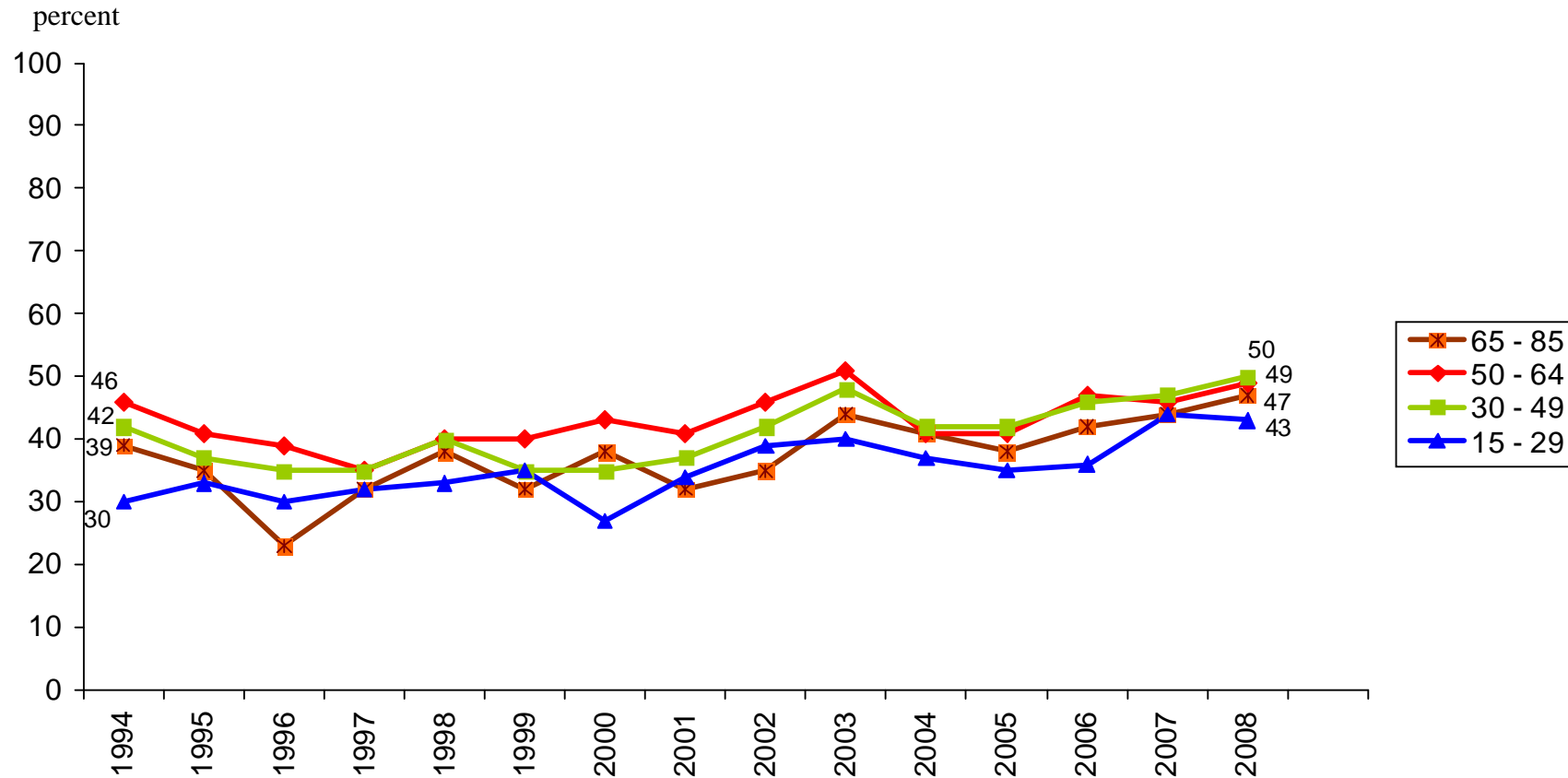
Percent in Favour of the Swedish Membership in the European Union among Women and Men, 1994–2008



Data: The annual nationwide SOM survey, the SOM Institute, University of Gothenburg, Sweden.

Principal investigator: Sören Holmberg, phone +46 31 786 12 27, e-mail: soren.holmberg@pol.gu.se. Data processed by Jonas Ohlsson, the SOM Institute.

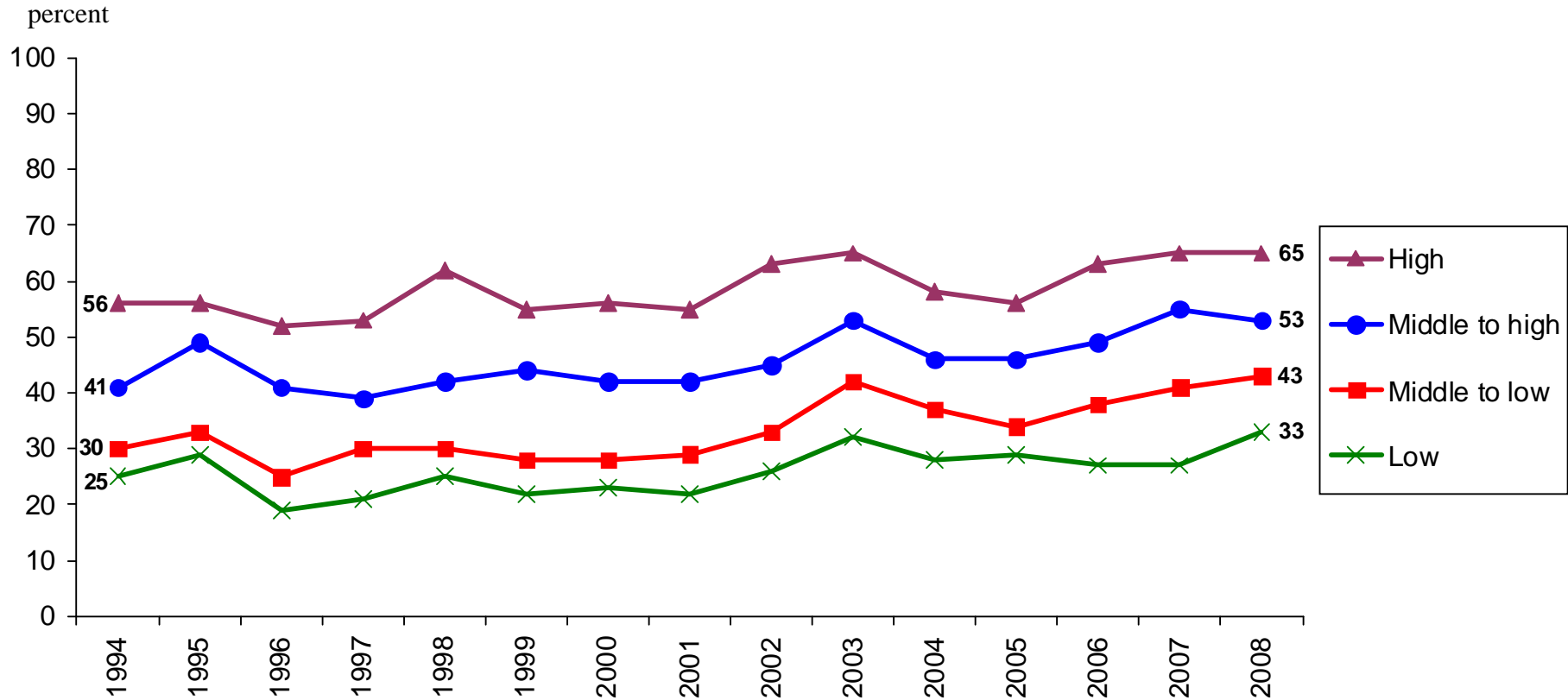
Percent in Favour of the Swedish Membership in the European Union among Swedes in Different Age Groups, 1994–2008



Data: The annual nationwide SOM survey, the SOM Institute, University of Gothenburg, Sweden.

Principal investigator: Sören Holmberg, phone +46 31 786 12 27, e-mail: soren.holmberg@pol.gu.se. Data processed by Jonas Ohlsson, the SOM Institute.

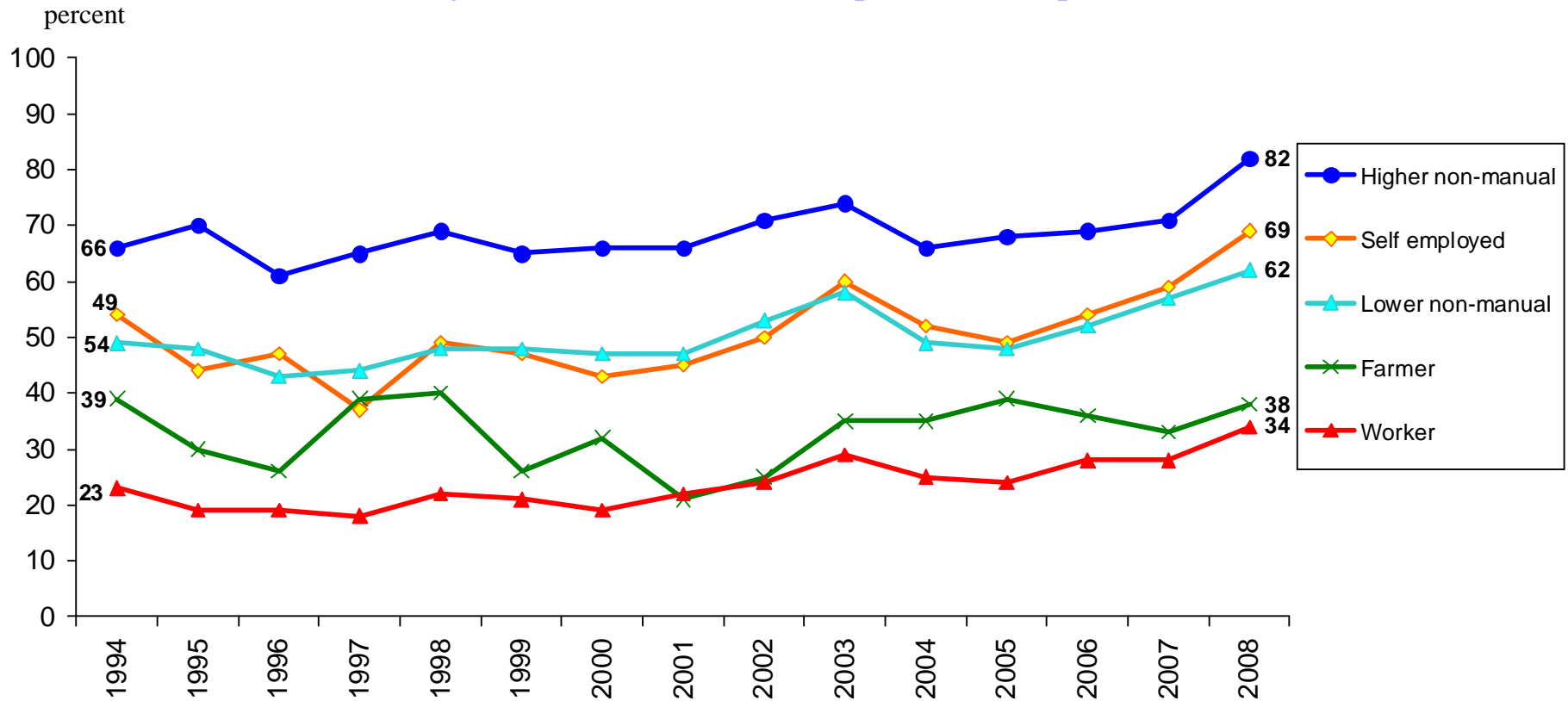
Percent in Favour of the Swedish Membership in the European Union among Swedes in Different Educational Groups, 1994–2008



Data: The annual nationwide SOM survey, the SOM Institute, University of Gothenburg, Sweden.

Principal investigator: Sören Holmberg, phone +46 31 786 12 27, e-mail: soren.holmberg@pol.gu.se. Data processed by Jonas Ohlsson, the SOM Institute.

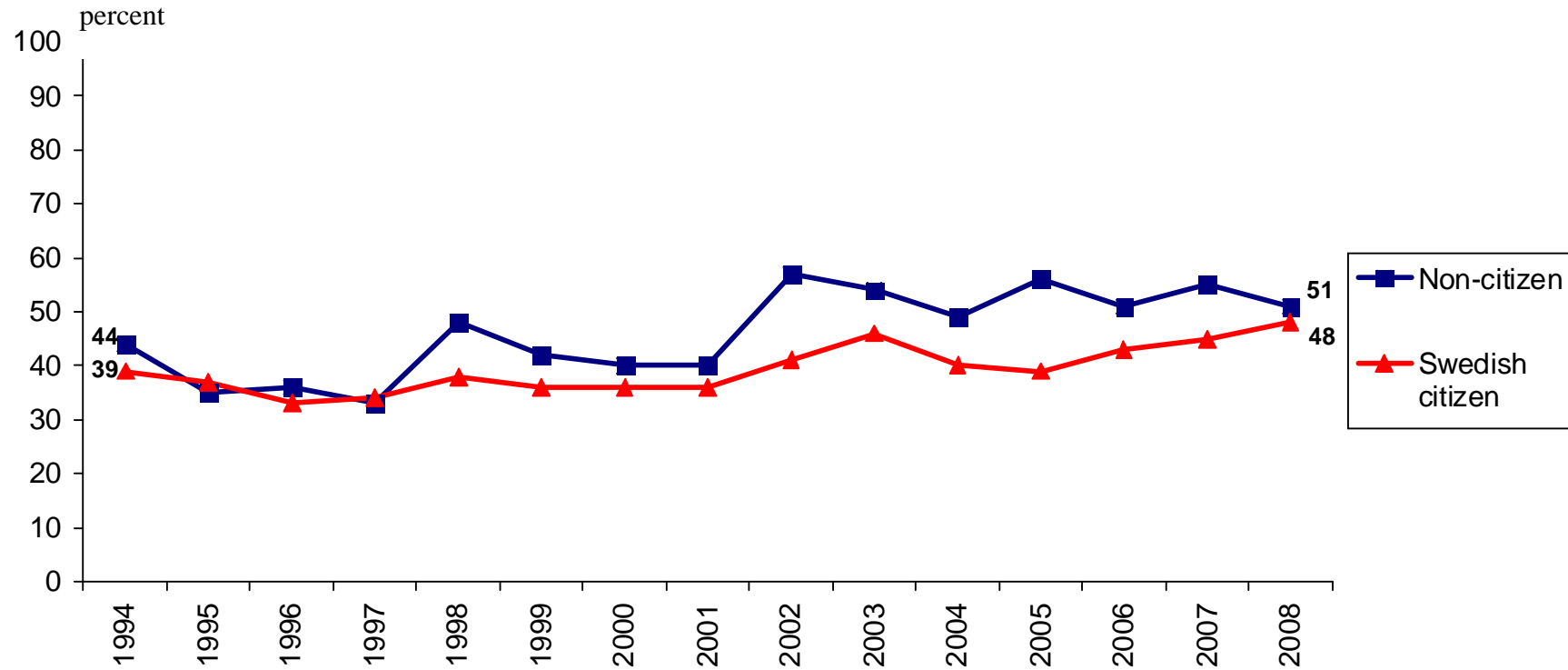
Percent in Favour of the Swedish Membership in the European Union among Swedes in Different Occupational Groups, 1994–2008



Data: The annual nationwide SOM survey, the SOM Institute, University of Gothenburg, Sweden.

Principal investigator: Sören Holmberg, phone +46 31 786 12 27, e-mail: soren.holmberg@pol.gu.se. Data processed by Jonas Ohlsson, the SOM Institute.

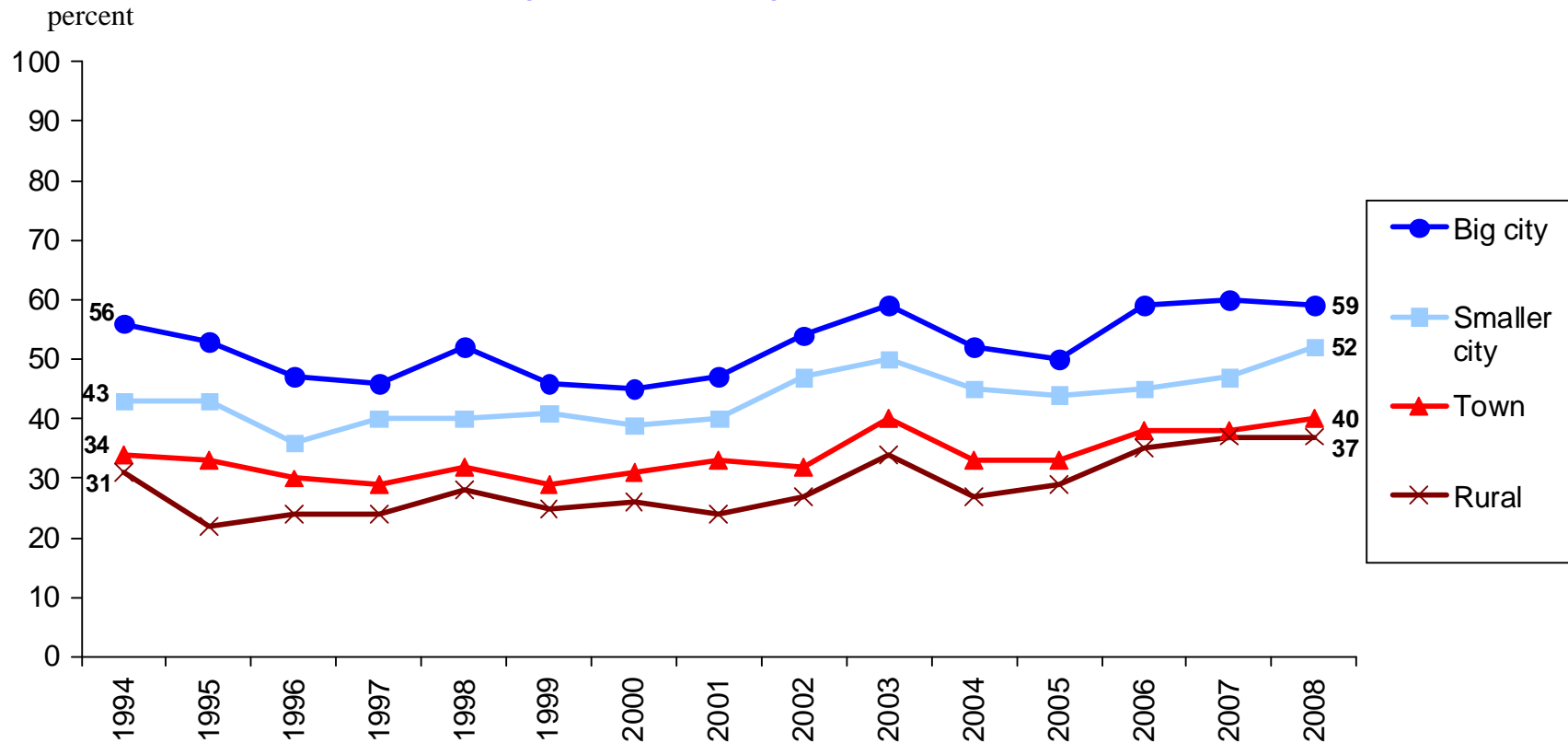
Percent in Favour of the Swedish Membership in the European Union among Swedish Citizens and Non-Citizens, 1994–2008



Data: The annual nationwide SOM survey, the SOM Institute, University of Gothenburg, Sweden.

Principal investigator: Sören Holmberg, phone +46 31 786 12 27, e-mail: soren.holmberg@pol.gu.se. Data processed by Jonas Ohlsson, the SOM Institute.

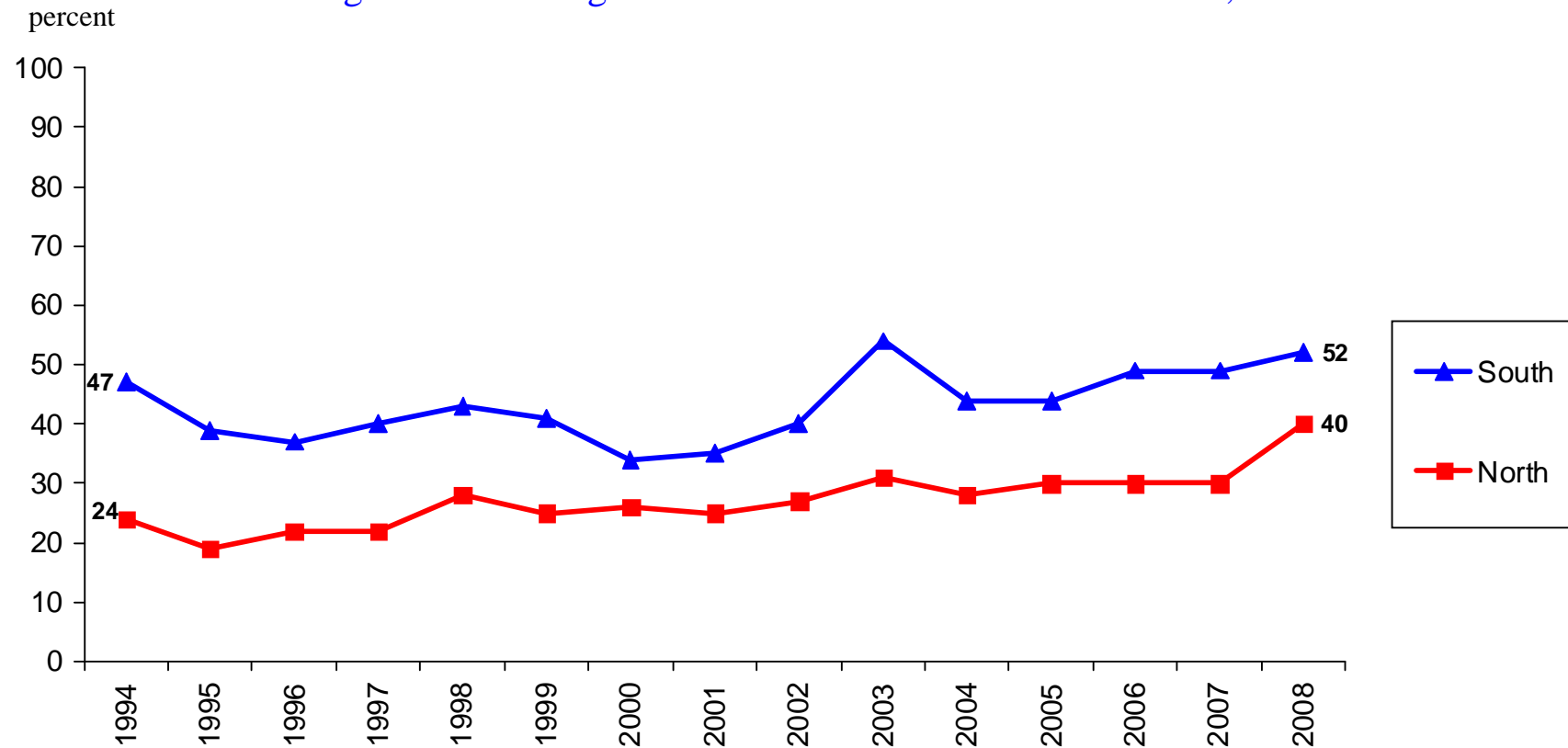
Percent in Favour of the Swedish Membership in the European Union among Swedes Living in Cities or Rural Areas, 1994–2008



Data: The annual nationwide SOM survey, the SOM Institute, University of Gothenburg, Sweden.

Principal investigator: Sören Holmberg, phone +46 31 786 12 27, e-mail: soren.holmberg@pol.gu.se. Data processed by Jonas Ohlsson, the SOM Institute.

Percent in Favour of the Swedish Membership in the European Union among Swedes Living in the North or in the South of Sweden, 1994–2008

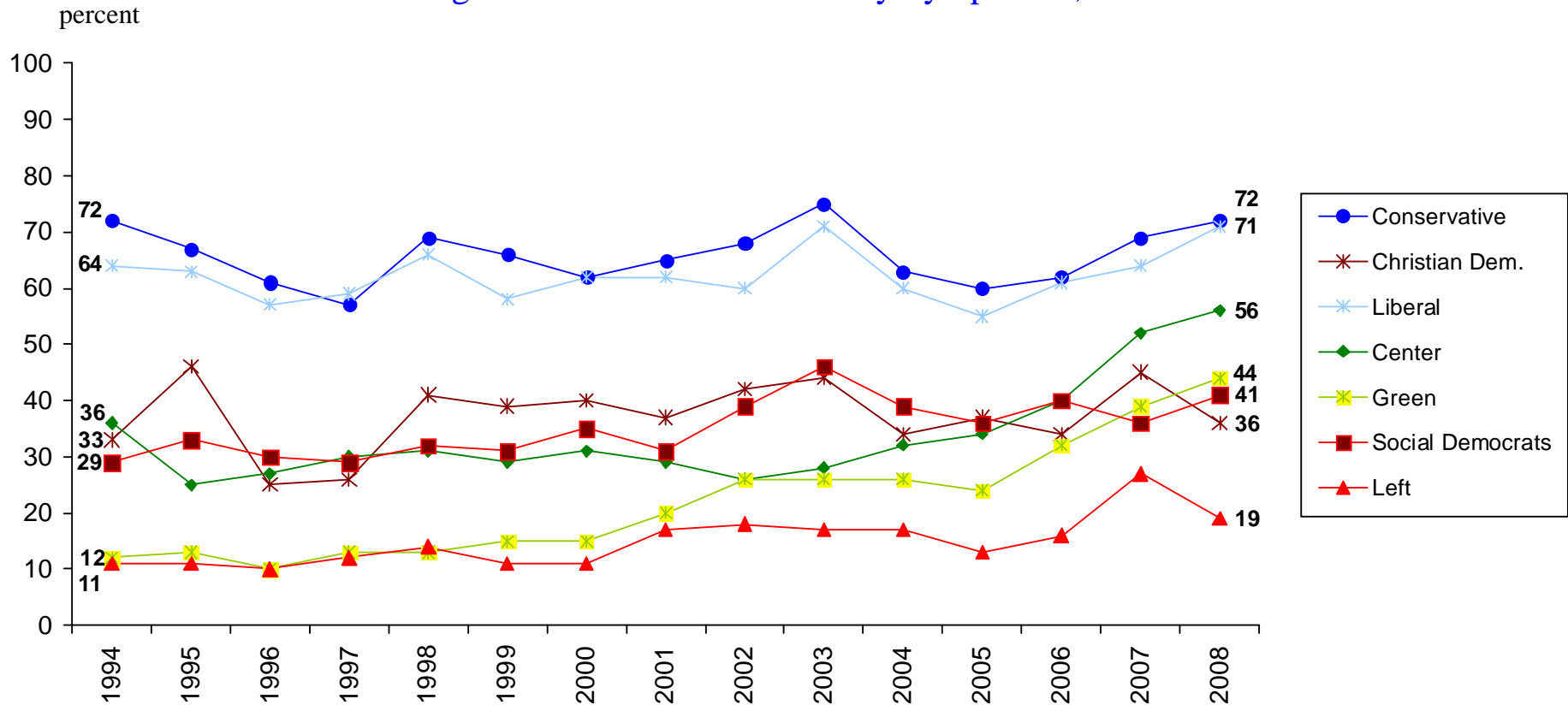


Comment: The South is defined as *Southern Sweden (Skåne and Blekinge)* and the North is defined as *Upper Norrland*.

Data: The annual nationwide SOM survey, the SOM Institute, University of Gothenburg, Sweden.

Principal investigator: Sören Holmberg, phone +46 31 786 12 27, e-mail: soren.holmberg@pol.gu.se. Data processed by Jonas Ohlsson, the SOM Institute.

Percent in Favour of the Swedish Membership in the European Union among Swedes with Different Party Sympathies, 1994–2008

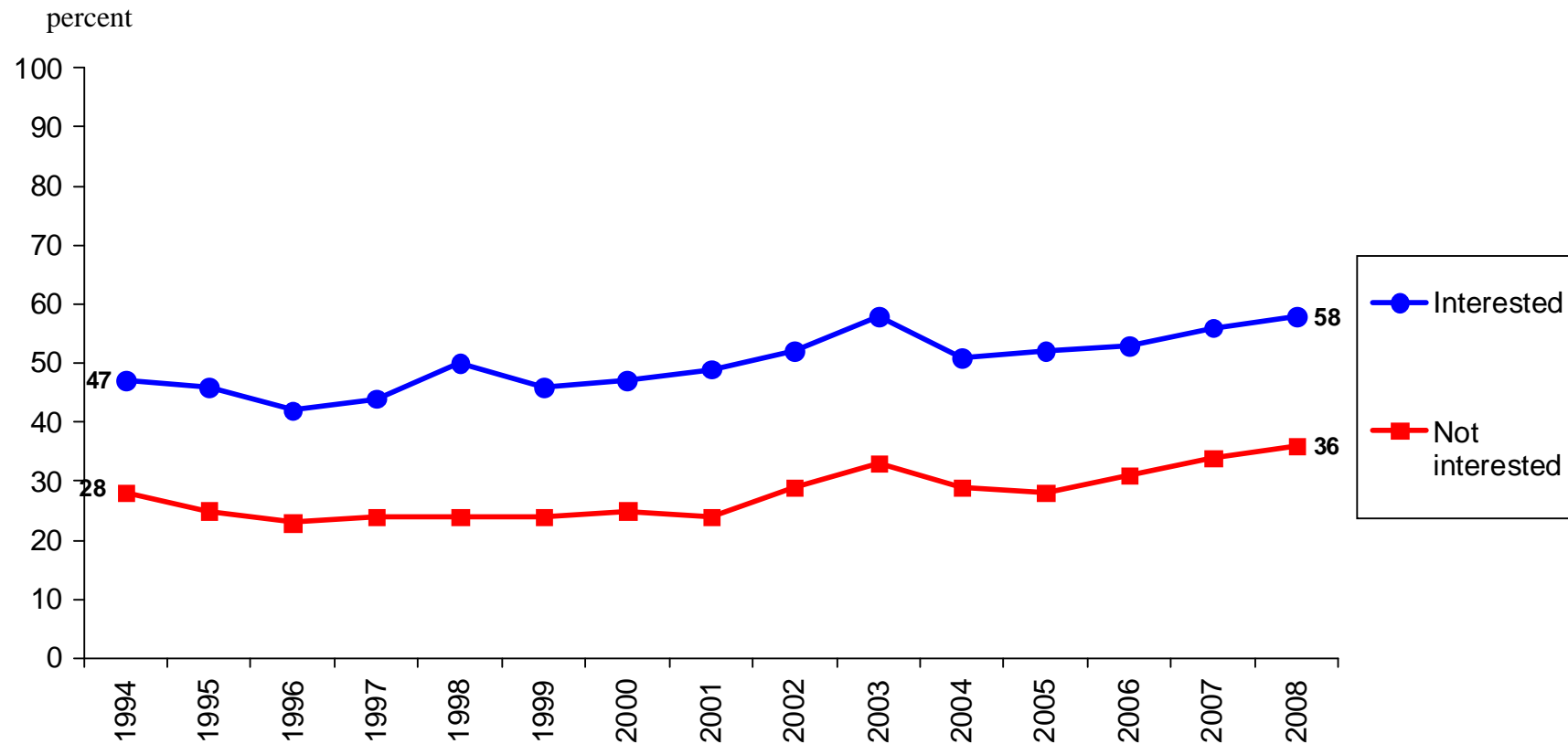


Comment: The percentage for the Sweden Democrats was 18 in 2006, 14 in 2007 and 21 in 2008.

Data: The annual nationwide SOM survey, the SOM Institute, University of Gothenburg, Sweden.

Principal investigator: Sören Holmberg, phone +46 31 786 12 27, e-mail: soren.holmberg@pol.gu.se. Data processed by Jonas Ohlsson, the SOM Institute.

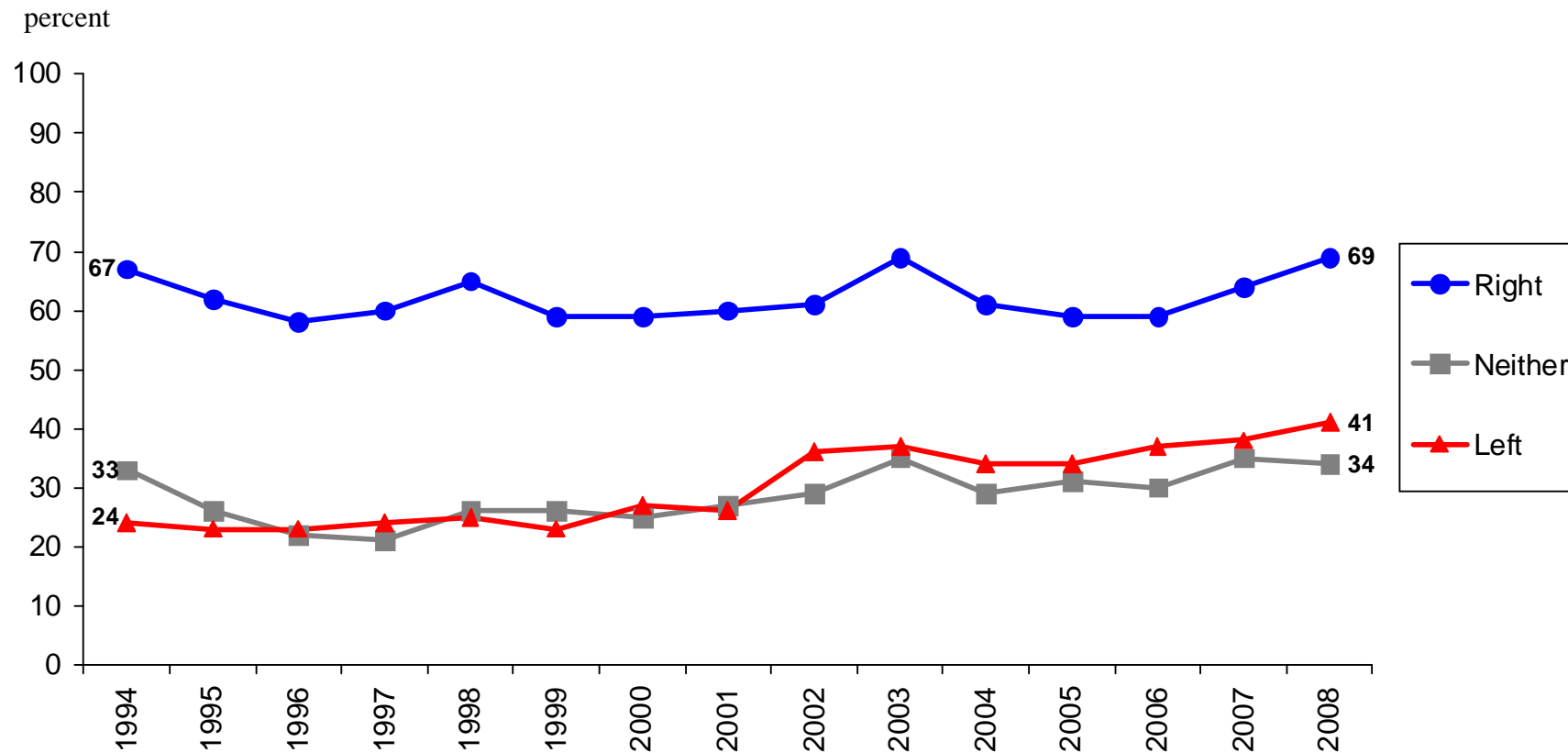
Percent in Favour of the Swedish Membership in the European Union among Swedes with Different Degrees of Political Interest, 1994–2008



Data: The annual nationwide SOM survey, the SOM Institute, University of Gothenburg, Sweden.

Principal investigator: Sören Holmberg, phone +46 31 786 12 27, e-mail: soren.holmberg@pol.gu.se. Data processed by Jonas Ohlsson, the SOM Institute.

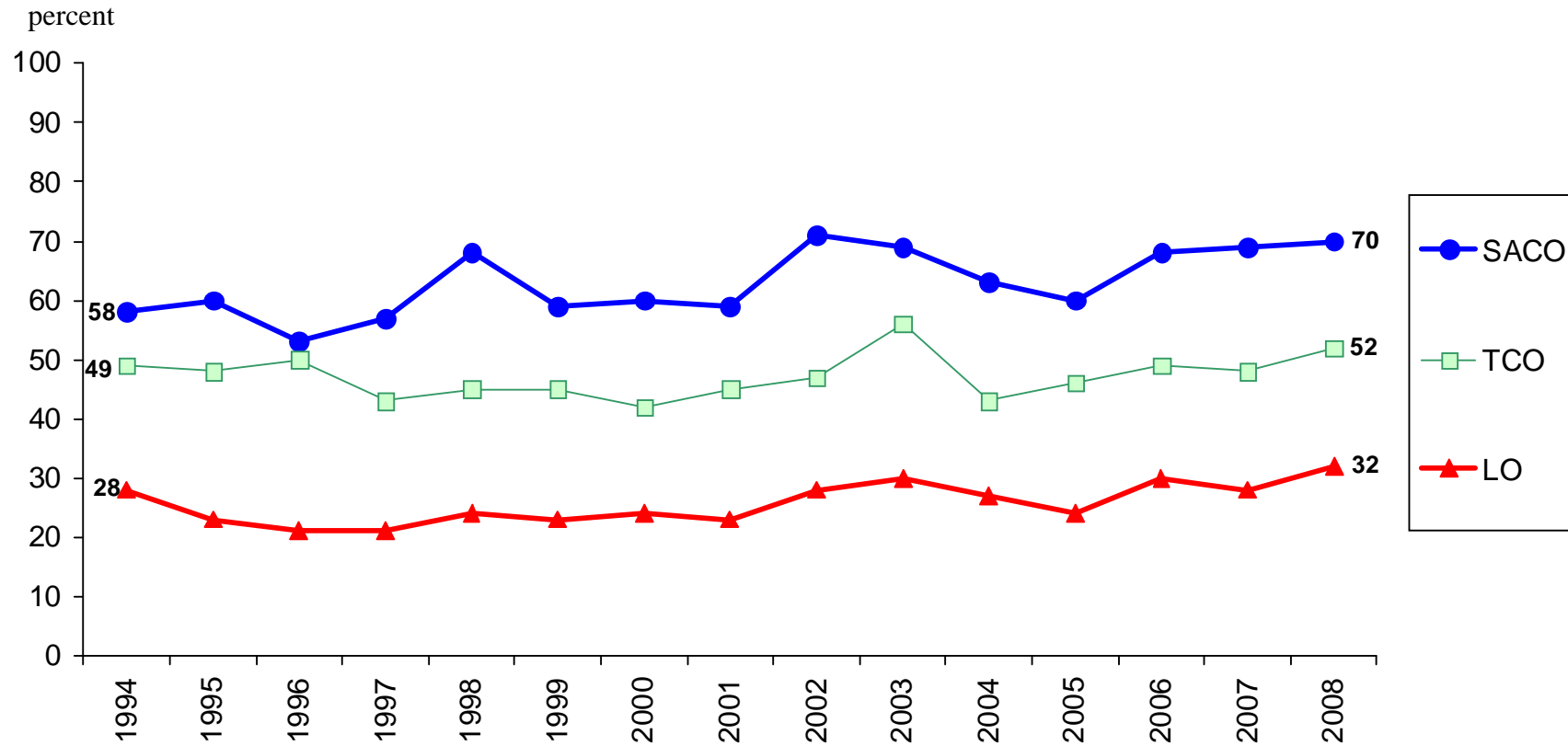
Percent in Favour of the Swedish Membership in the European Union among Swedes with Different Left-Right Ideological Self-Placements, 1994–2008



Data: The annual nationwide SOM survey, the SOM Institute, University of Gothenburg, Sweden.

Principal investigator: Sören Holmberg, phone +46 31 786 12 27, e-mail: soren.holmberg@pol.gu.se. Data processed by Jonas Ohlsson, the SOM Institute

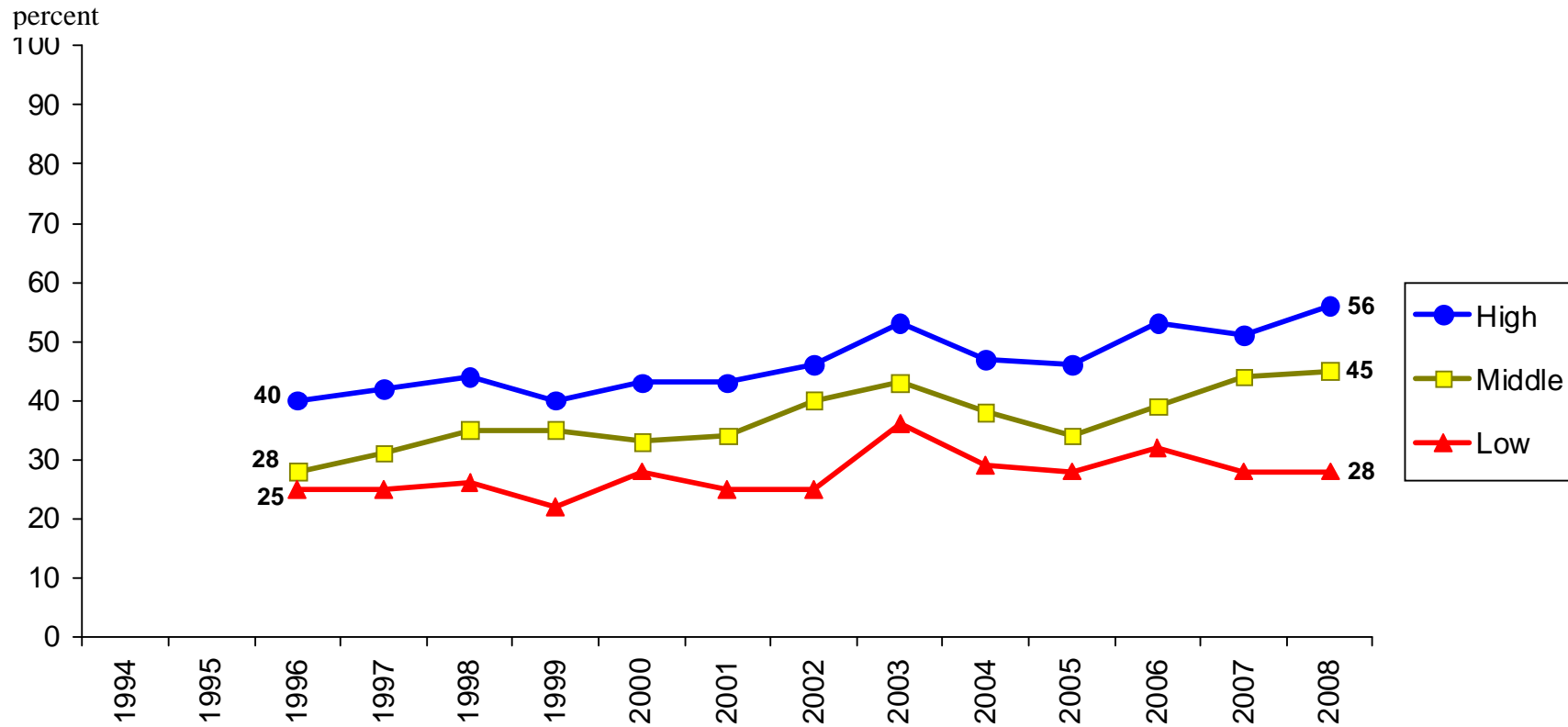
Percent in Favour of the Swedish Membership in the European Union among Members of Different Trade Unions, 1994–2008



Data: The annual nationwide SOM survey, the SOM Institute, University of Gothenburg, Sweden.

Principal investigator: Sören Holmberg, phone +46 31 786 12 27, e-mail: soren.holmberg@pol.gu.se. Data processed by Jonas Ohlsson, the SOM Institute.

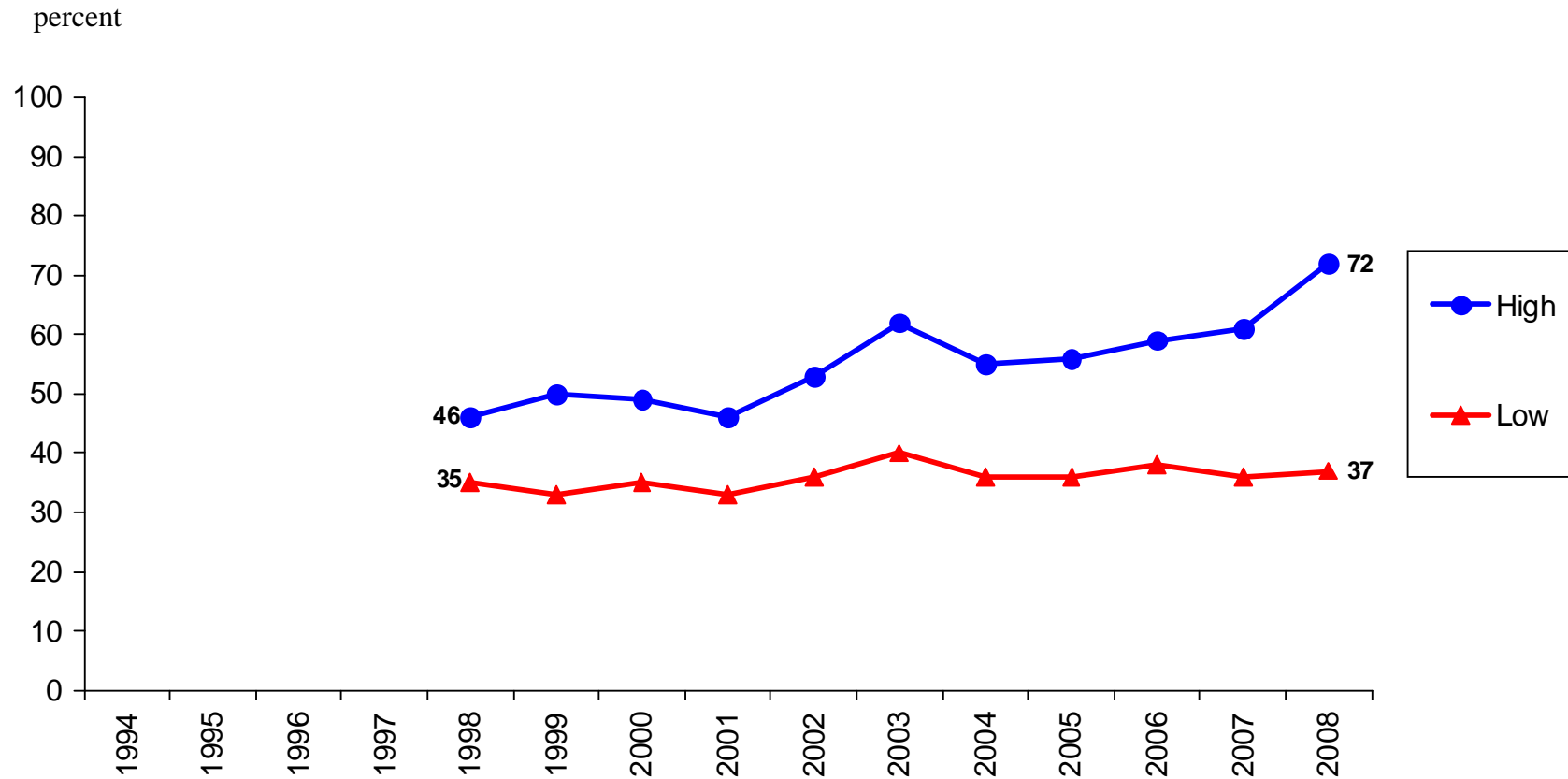
Percent in Favour of the Swedish Membership in the European Union among Swedes with Different Degrees of General Trust in Other People, 1996–2008



Data: The annual nationwide SOM survey, the SOM Institute, University of Gothenburg, Sweden.

Principal investigator: Sören Holmberg, phone +46 31 786 12 27, e-mail: soren.holmberg@pol.gu.se. Data processed by Jonas Ohlsson, the SOM Institute.

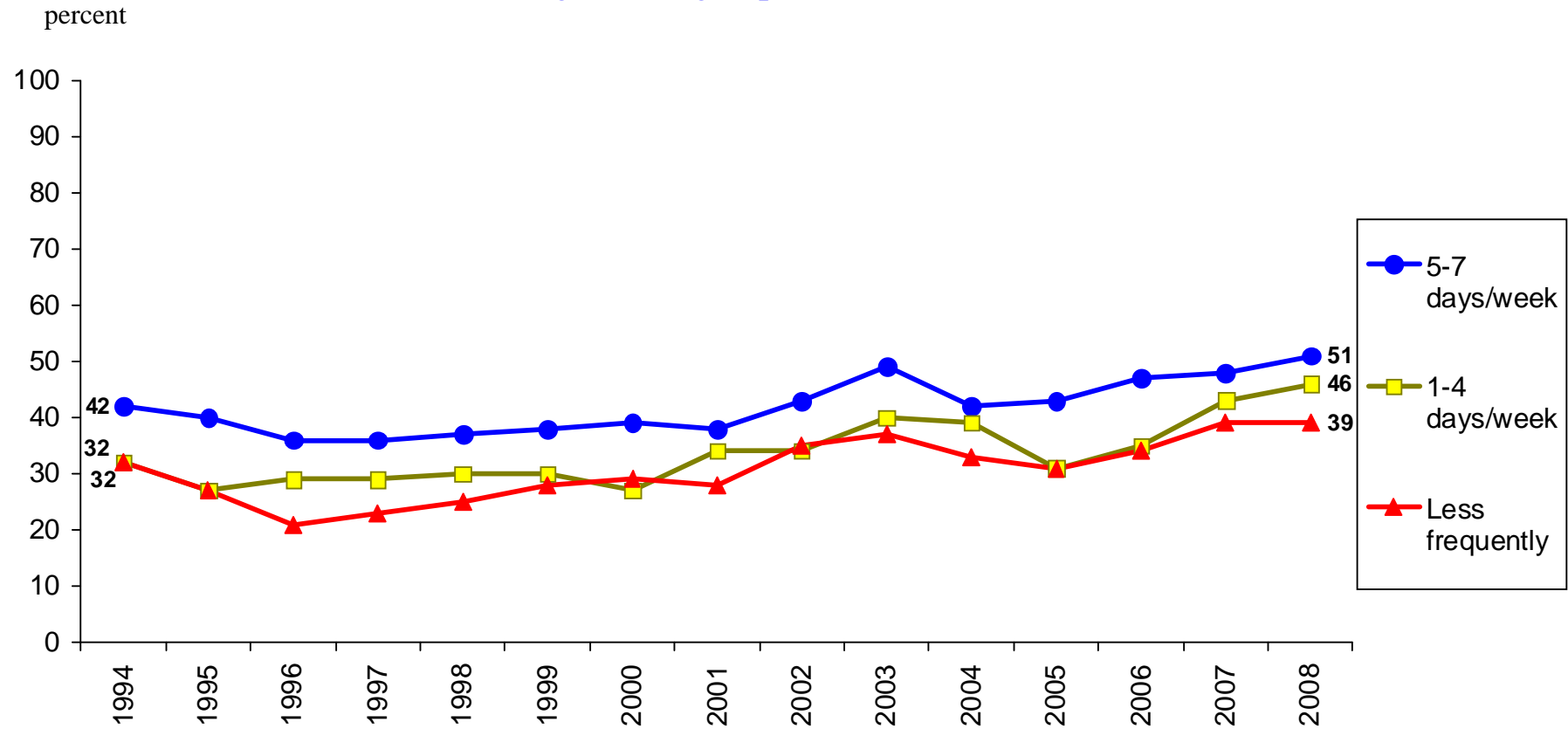
Percent in Favour of the Swedish Membership in the European Union among Swedes with Different Degrees of General Trust in Politicians, 1998–2008



Data: The annual nationwide SOM survey, the SOM Institute, University of Gothenburg, Sweden.

Principal investigator: Sören Holmberg, phone +46 31 786 12 27, e-mail: soren.holmberg@pol.gu.se. Data processed by Jonas Ohlsson, the SOM Institute.

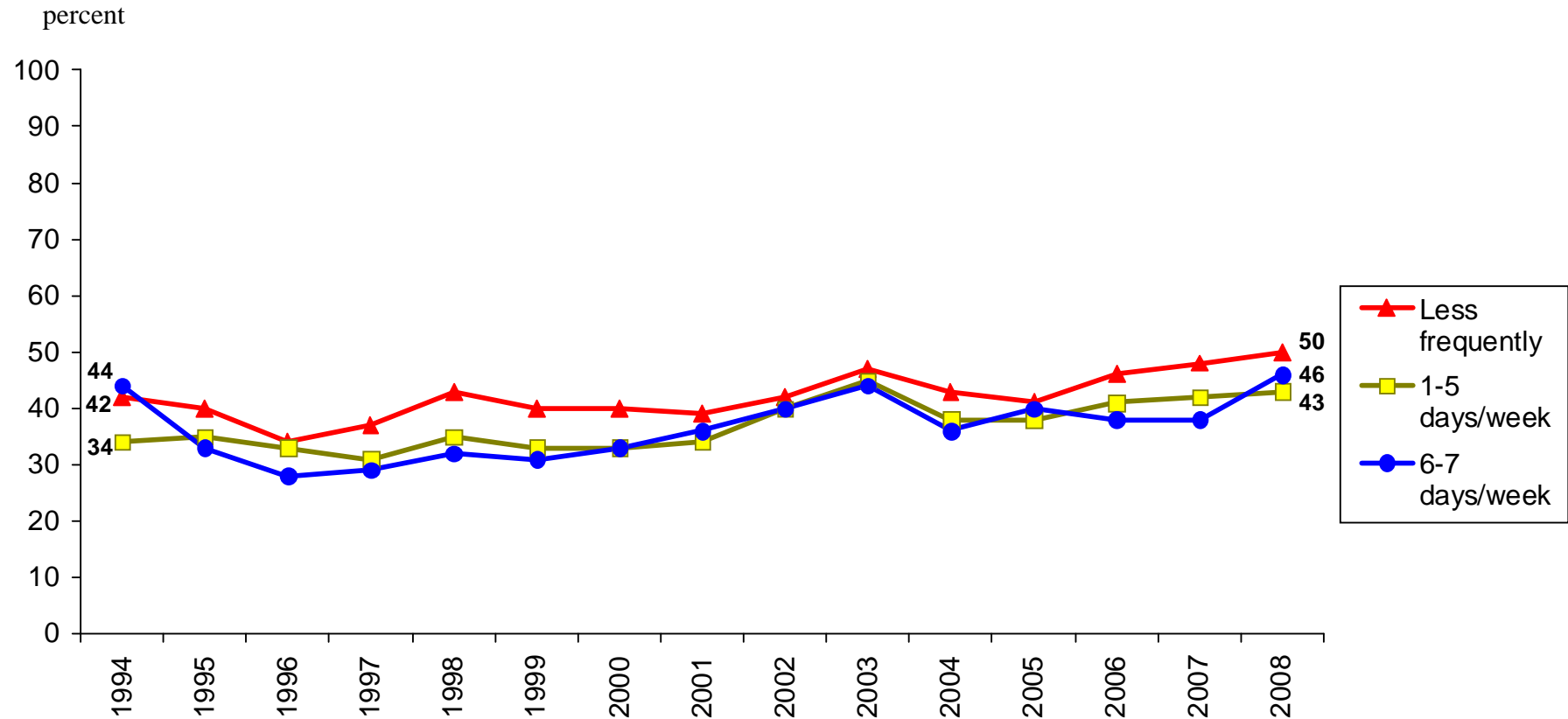
Percent in Favour of the Swedish Membership in the European Union among Morning Paper Readers, 1994–2008



Data: The annual nationwide SOM survey, the SOM Institute, University of Gothenburg, Sweden.

Principal investigator: Sören Holmberg, phone +46 31 786 12 27, e-mail: soren.holmberg@pol.gu.se. Data processed by Jonas Ohlsson, the SOM Institute.

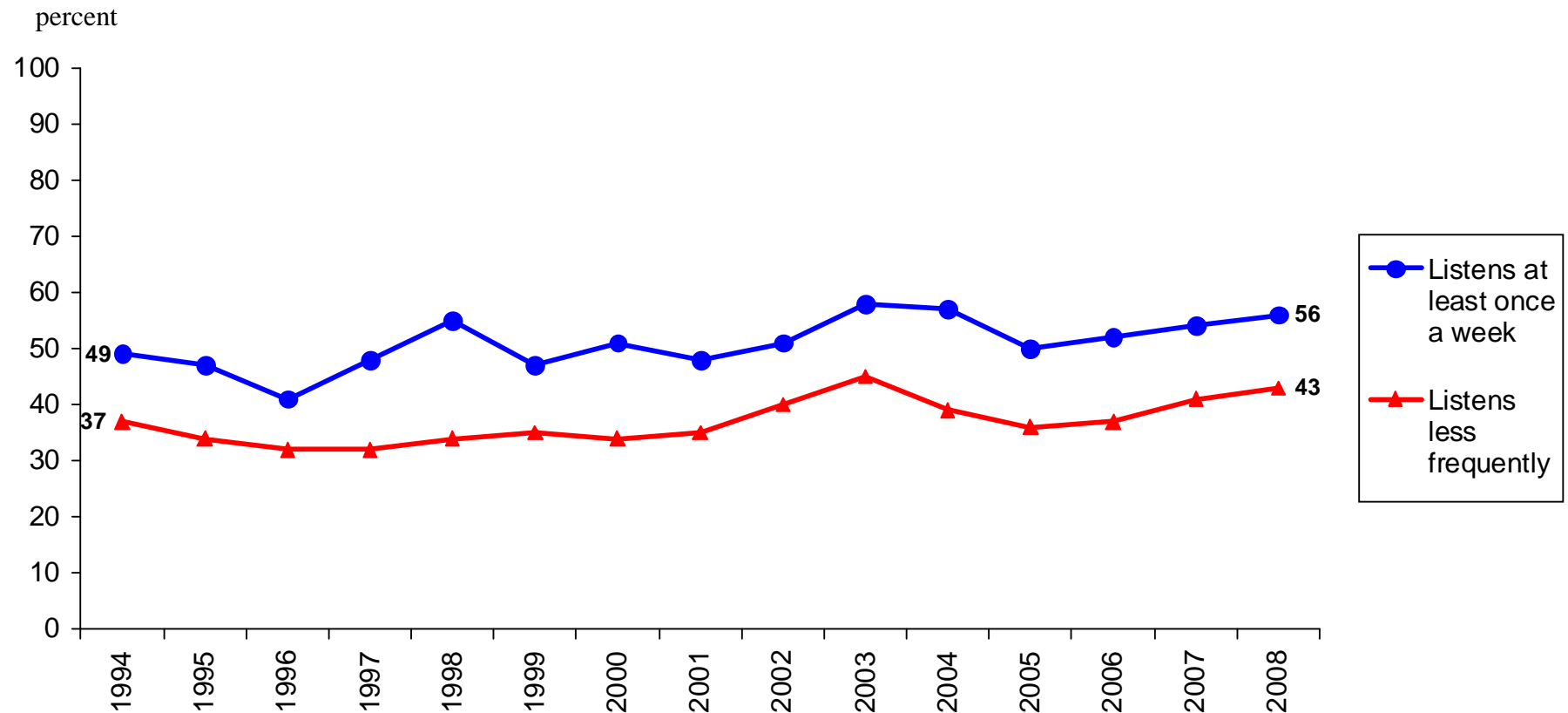
Percent in Favour of the Swedish Membership in the European Union among Evening Paper Readers, 1994–2008



Data: The annual nationwide SOM survey, the SOM Institute, University of Gothenburg, Sweden.

Principal investigator: Sören Holmberg, phone +46 31 786 12 27, e-mail: soren.holmberg@pol.gu.se. Data processed by Jonas Ohlsson, the SOM Institute.

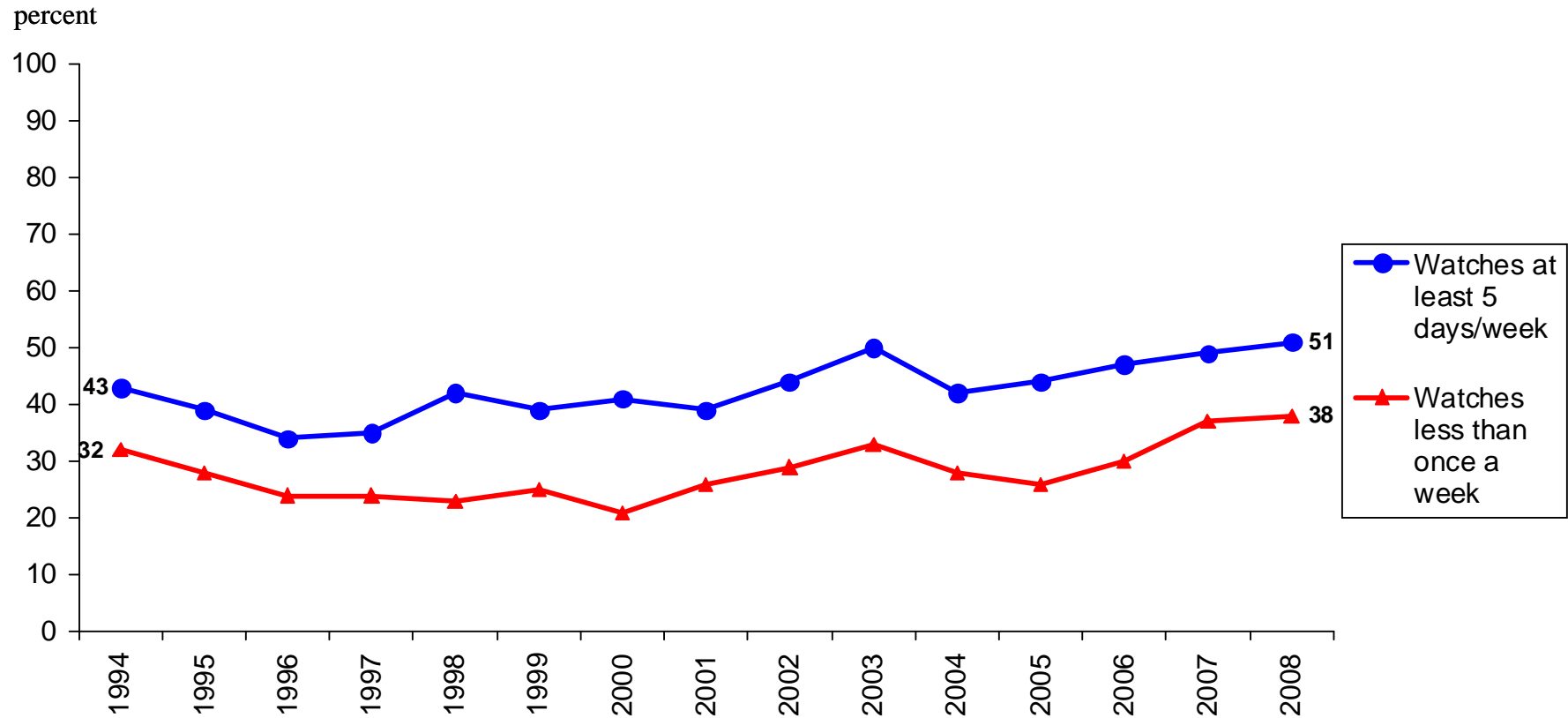
Percent in Favour of the Swedish Membership in the European Union among Listeners to Public Service Radio News (“Ekot”), 1994–2008



Data: The annual nationwide SOM survey, the SOM Institute, University of Gothenburg, Sweden.

Principal investigator: Sören Holmberg, phone +46 31 786 12 27, e-mail: soren.holmberg@pol.gu.se. Data processed by Jonas Ohlsson, the SOM Institute.

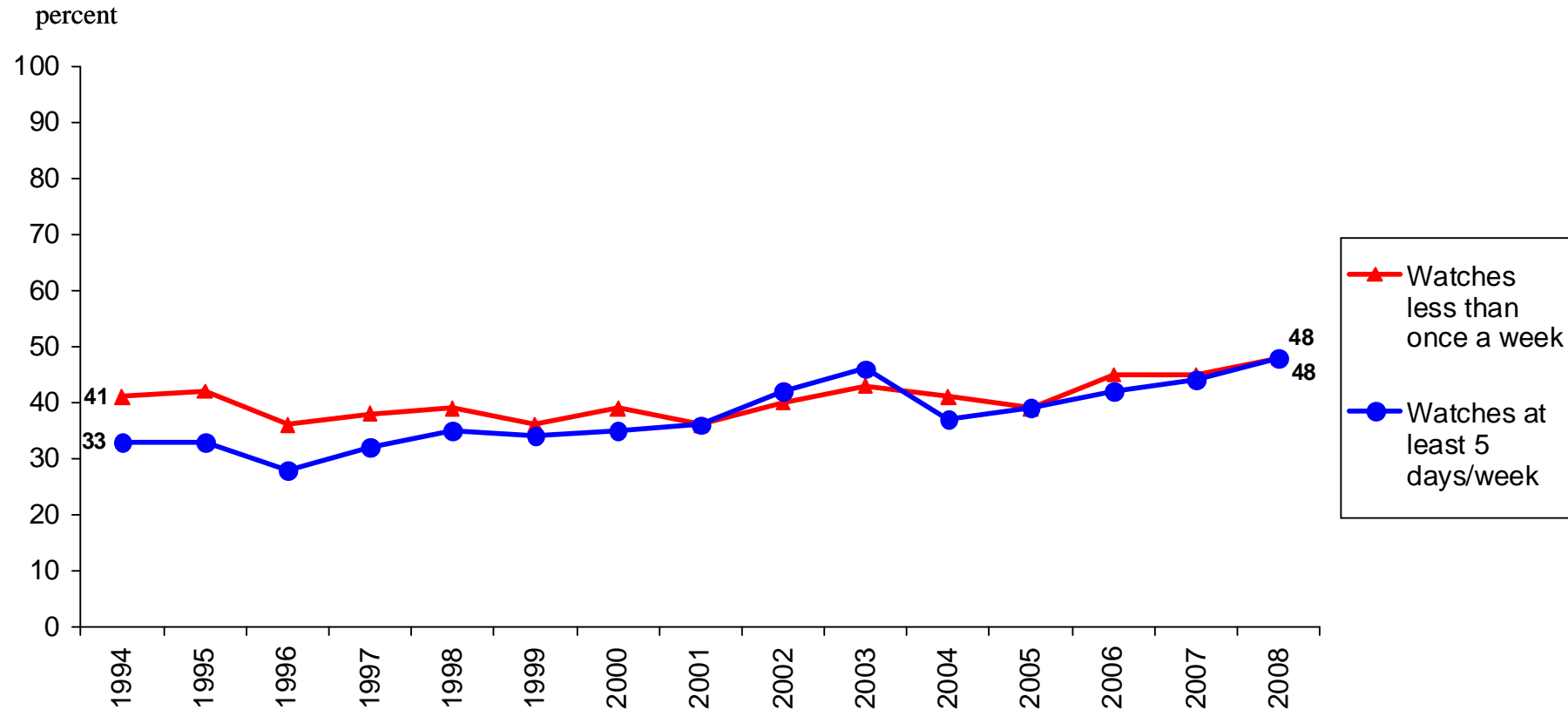
Percent in Favour of the Swedish Membership in the European Union among Viewers of Public Service Television News (SVT), 1994–2008



Data: The annual nationwide SOM survey, the SOM Institute, University of Gothenburg, Sweden.

Principal investigator: Sören Holmberg, phone +46 31 786 12 27, e-mail: soren.holmberg@pol.gu.se. Data processed by Jonas Ohlsson, the SOM Institute.

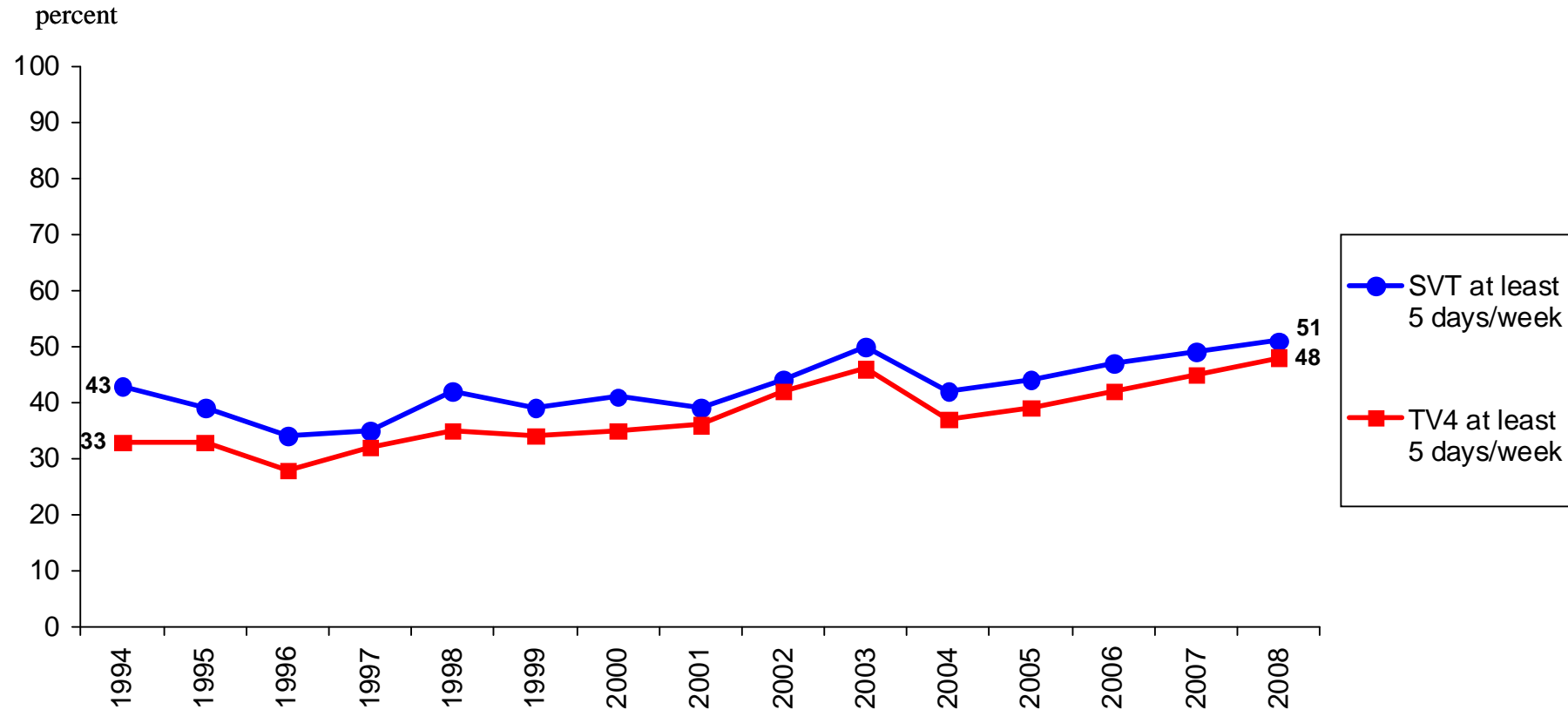
Percent in Favour of the Swedish Membership in the European Union among Viewers of Commercial Television News (TV4), 1994–2008



Data: The annual nationwide SOM survey, the SOM Institute, University of Gothenburg, Sweden.

Principal investigator: Sören Holmberg, phone +46 31 786 12 27, e-mail: soren.holmberg@pol.gu.se. Data processed by Jonas Ohlsson, the SOM Institute.

Percent in Favour of the Swedish Membership in the European Union among Viewers of Television News on SVT or TV4, 1994–2008



Data: The annual nationwide SOM survey, the SOM Institute, University of Gothenburg, Sweden.

Principal investigator: Sören Holmberg, phone +46 31 786 12 27, e-mail: soren.holmberg@pol.gu.se. Data processed by Jonas Ohlsson, the SOM Institute.

The SOM Institute
University of Gothenburg
Box 710
SE-405 30 Göteborg
Sweden

www.som.gu.se

soren.holmberg@pol.gu.se
jonas.ohlsson@jmg.gu.se