

S O M

Swedish Opinion
on the
Swedish Membership
in the
European Union
1994-2006



GÖTEBORG
UNIVERSITY

SOM INSTITUTE
Society Opinion Massmedia

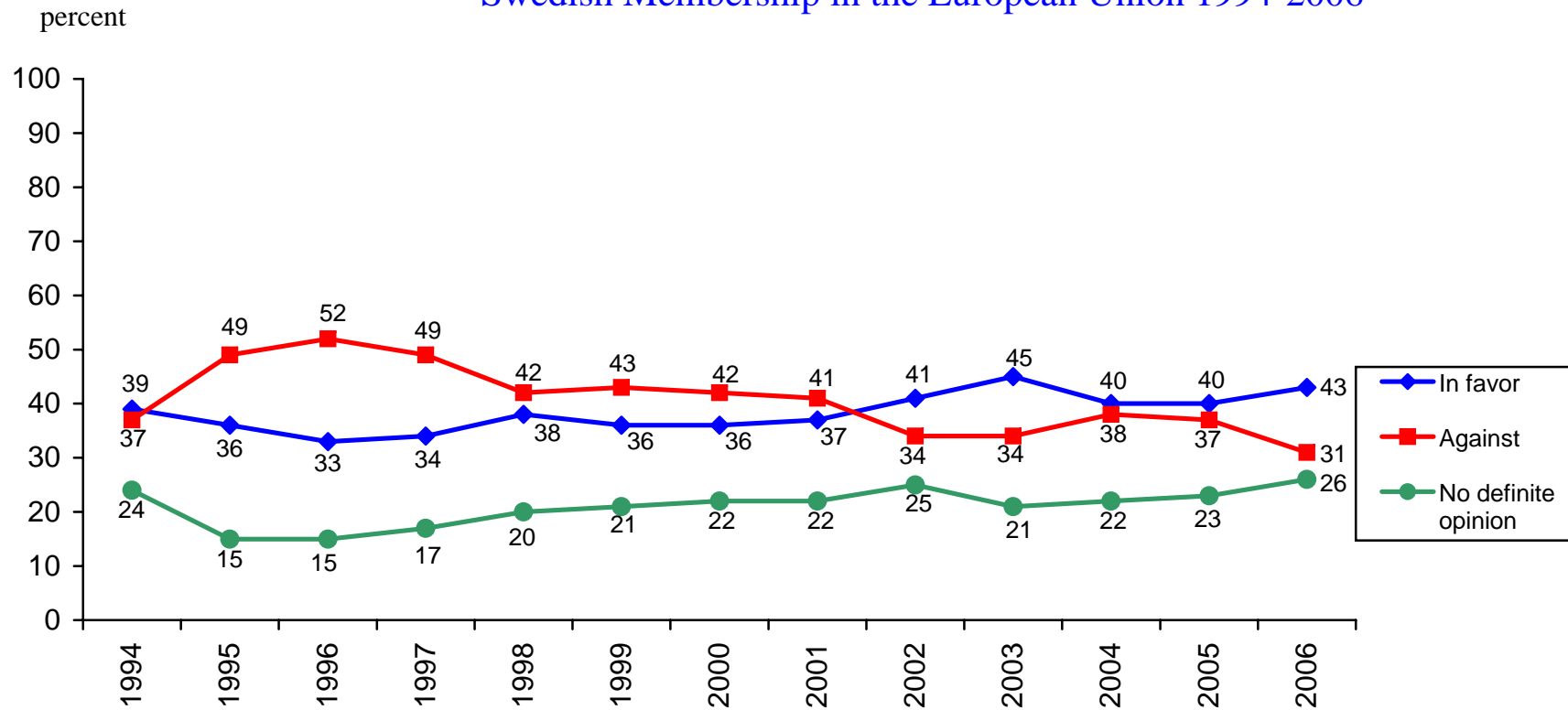
Sören Holmberg
March 2007

s
o
c
i
e
t
y

o
p
i
n
i
o
n

m
a
s
s
m
e
d
i
a

Swedish Membership in the European Union 1994-2006

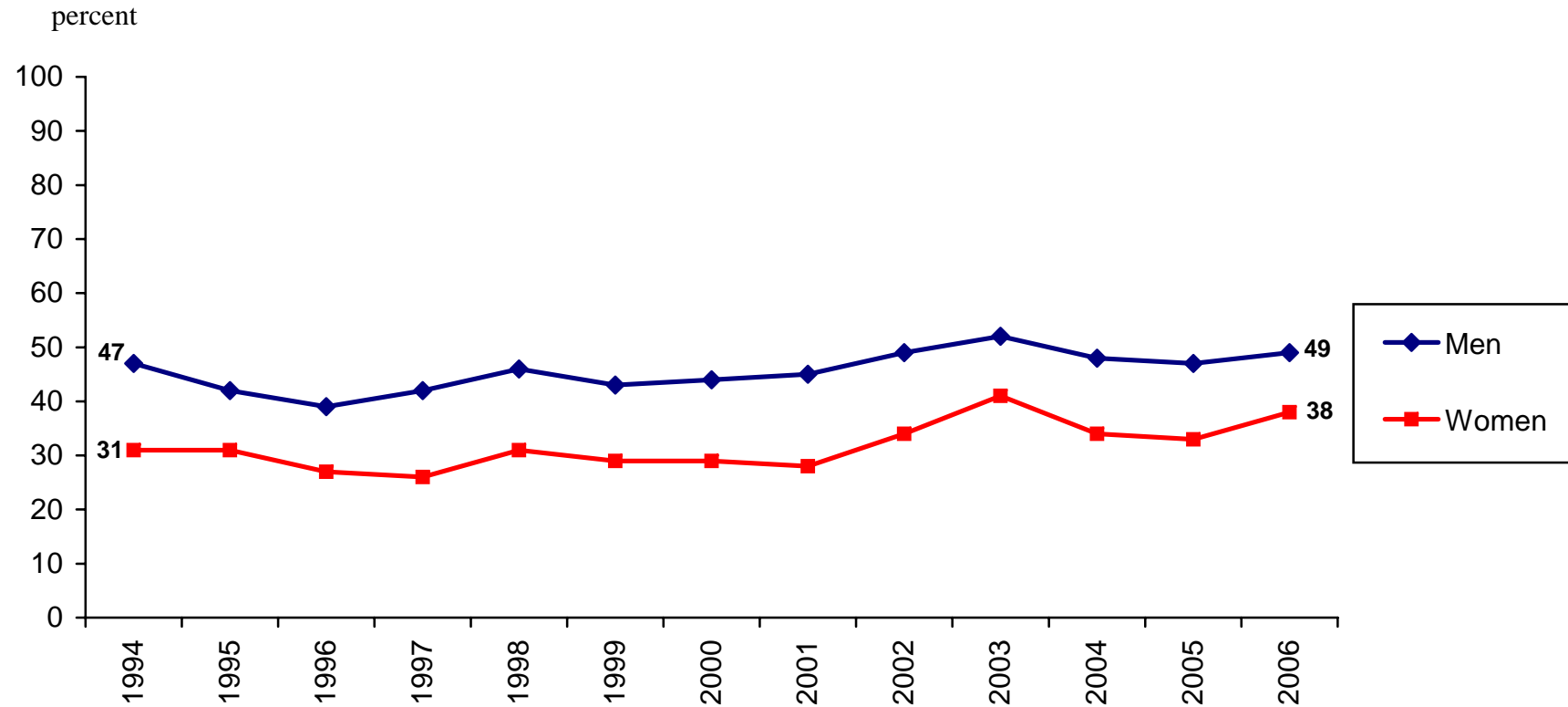


Data: SOM-Institute, Göteborg University; Annual nationwide surveys in Sweden; Sample size 6000 persons 15-85 years old; Mail questionnaires with an average response rate of 65 percent. **Question:** "What is your opinion of the Swedish membership in the European Union?" Three response alternatives: "On the whole in favor; On the whole against; No definite opinion."

Comment: All respondents answering the question are included in the percentage base.

Principal investigators: Sören Holmberg, phone +4631 7861227, e-mail: soren.holmberg@pol.gu.se; Lennart Weibull, phone +46 31 786 12 18, e-mail: lennart.weibull@jmg.gu.se. All data processed by Rudolf Antoni, assistant investigator at the SOM-Institute.

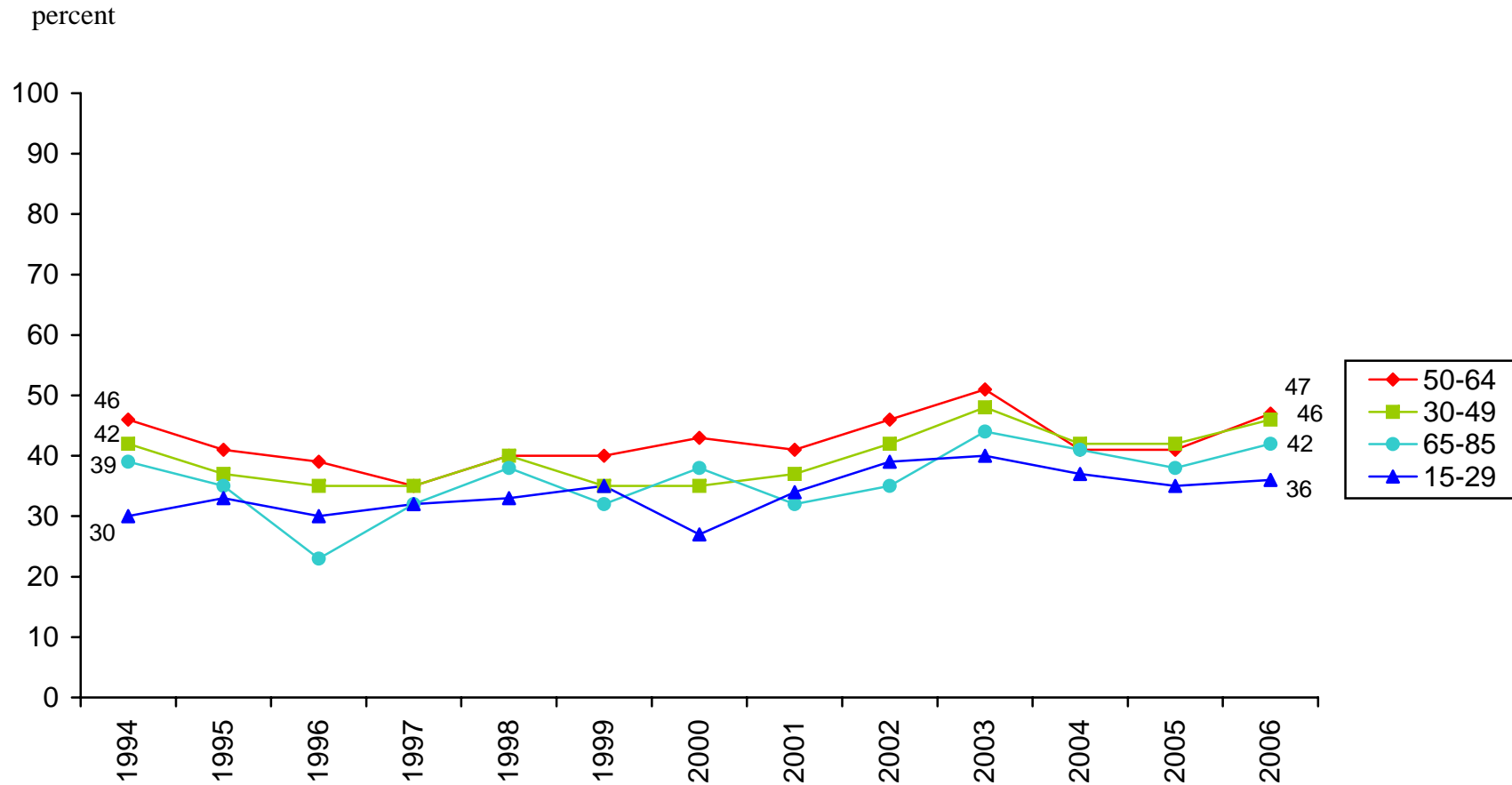
Percent in Favor of Swedish Membership in the European Union among Women and Men 1994-2006



Data: The annual nationwide SOM-survey, SOM-Institute, Göteborg University, Sweden.

Principal investigators: Sören Holmberg, phone +4631 7861227, e-mail: soren.holmberg@pol.gu.se; Lennart Weibull, phone +46 31 786 12 18, e-mail: lennart.weibull@jmg.gu.se. All data processed by Rudolf Antoni.

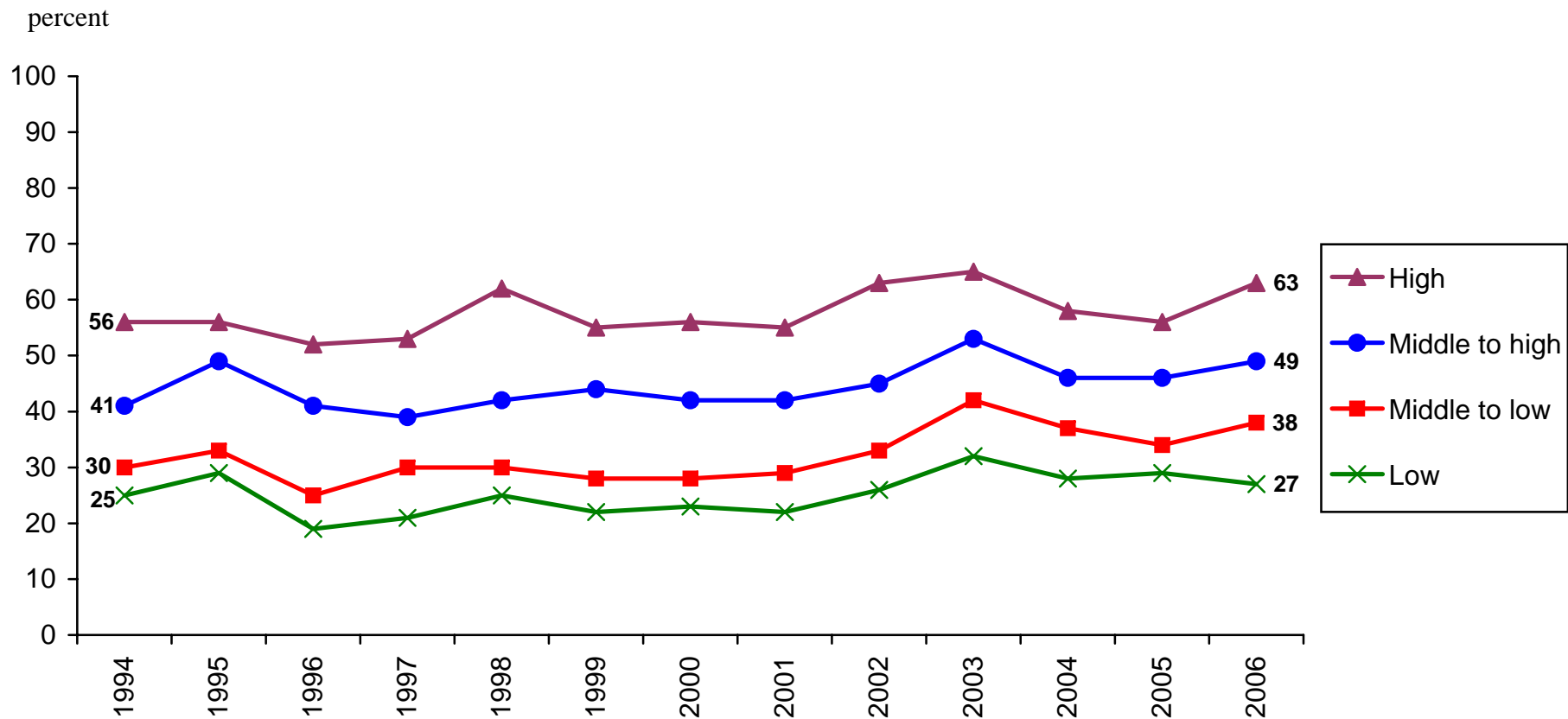
Percent in Favor of Swedish Membership in the European Union among Swedes in Different Age Groups 1994-2006



Data: The annual nationwide SOM-survey, SOM-Institute, Göteborg University, Sweden.

Principal investigators: Sören Holmberg, phone +4631 7861227, e-mail: soren.holmberg@pol.gu.se; Lennart Weibull, phone +46 31 786 12 18, e-mail: lennart.weibull@jmg.gu.se. All data processed by Rudolf Antoni.

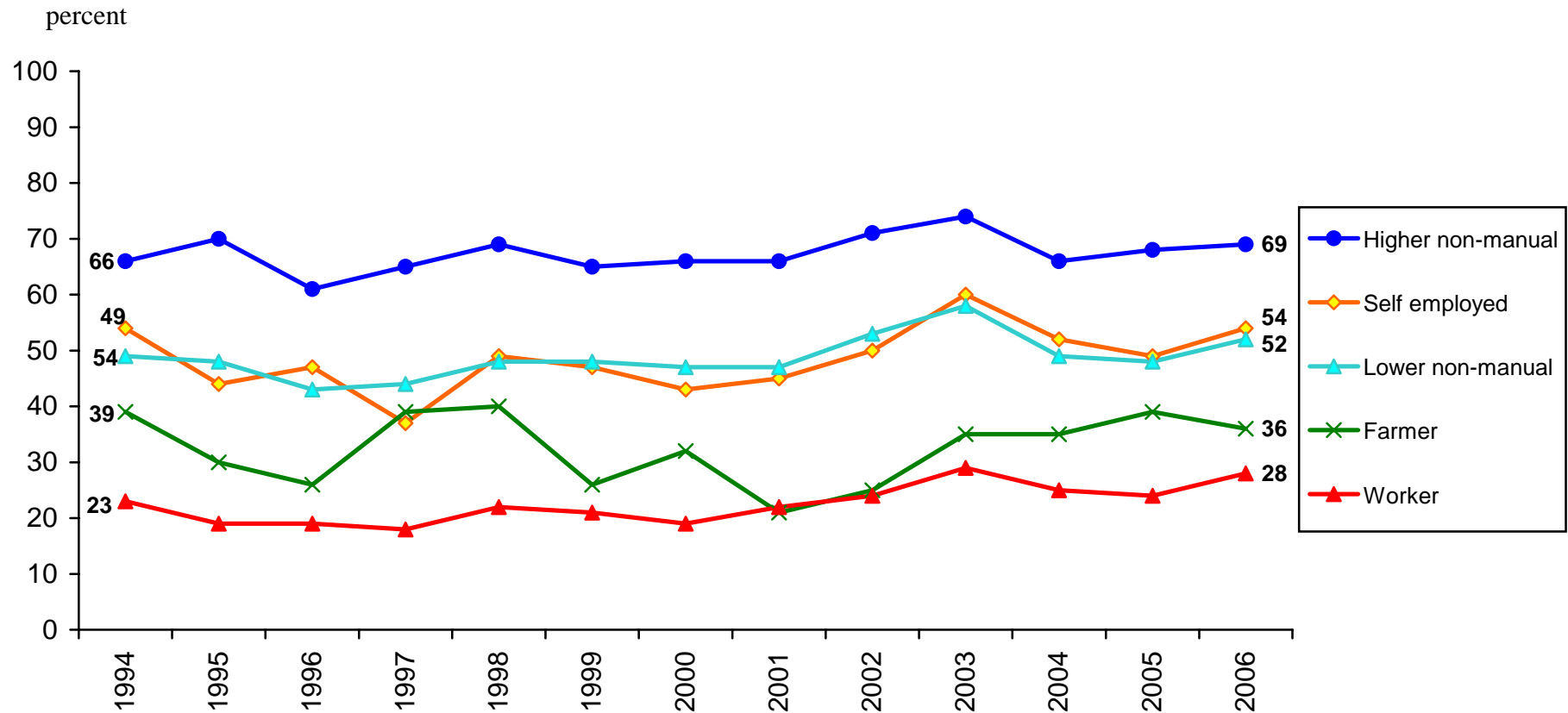
Percent in Favor of Swedish Membership in the European Union among Swedes in Different Educational Groups 1994-2006



Data: The annual nationwide SOM-survey, SOM-Institute, Göteborg University, Sweden.

Principal investigators: Sören Holmberg, phone +4631 7861227, e-mail: soren.holmberg@pol.gu.se; Lennart Weibull, phone +46 31 786 12 18, e-mail: lennart.weibull@jmg.gu.se. All data processed by Rudolf Antoni.

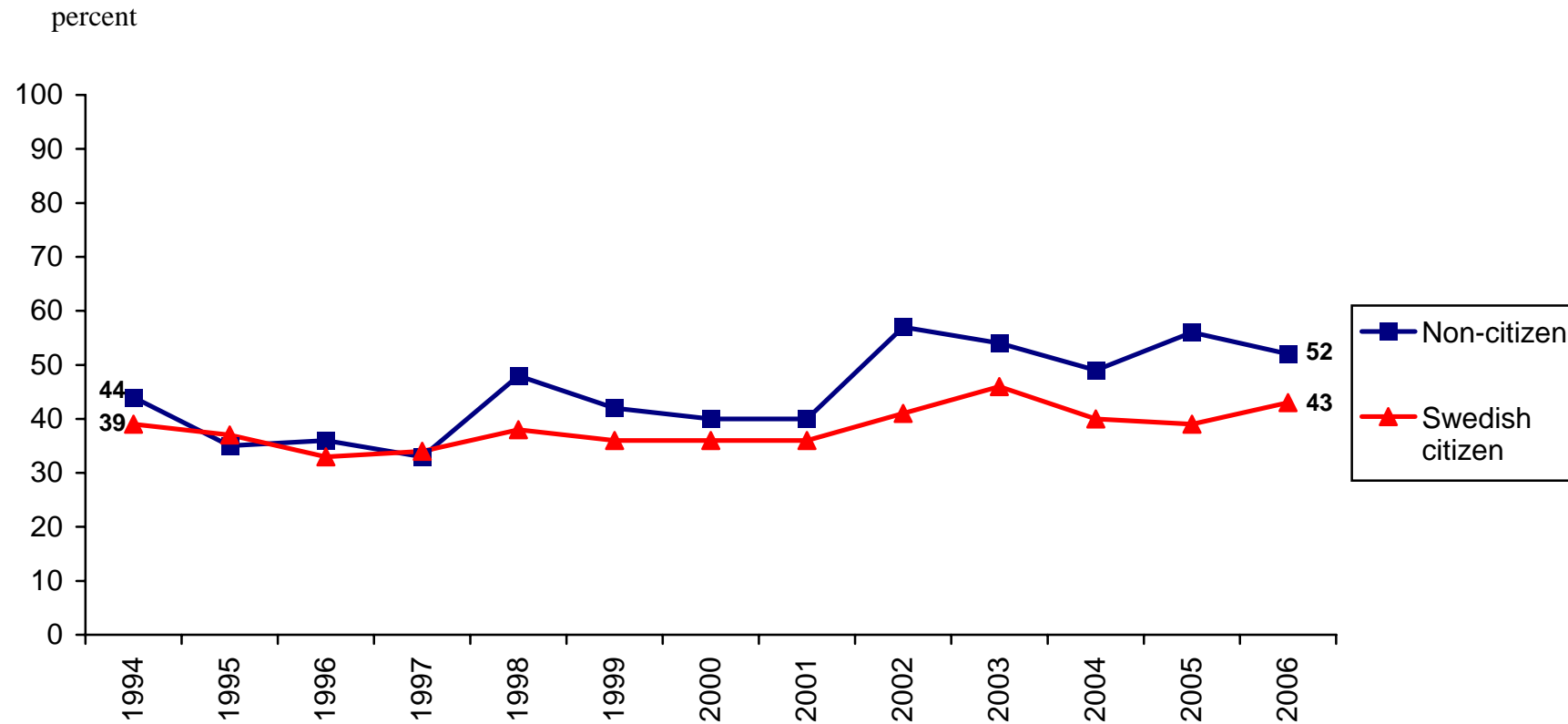
Percent in Favor of Swedish Membership in the European Union among Swedes in Different Subjective Family Classes 1994-2006



Data: The annual nationwide SOM-survey, SOM-Institute, Göteborg University, Sweden.

Principal investigators: Sören Holmberg, phone +4631 7861227, e-mail: soren.holmberg@pol.gu.se; Lennart Weibull, phone +46 31 786 12 18, e-mail: lennart.weibull@jmg.gu.se. All data processed by Rudolf Antoni.

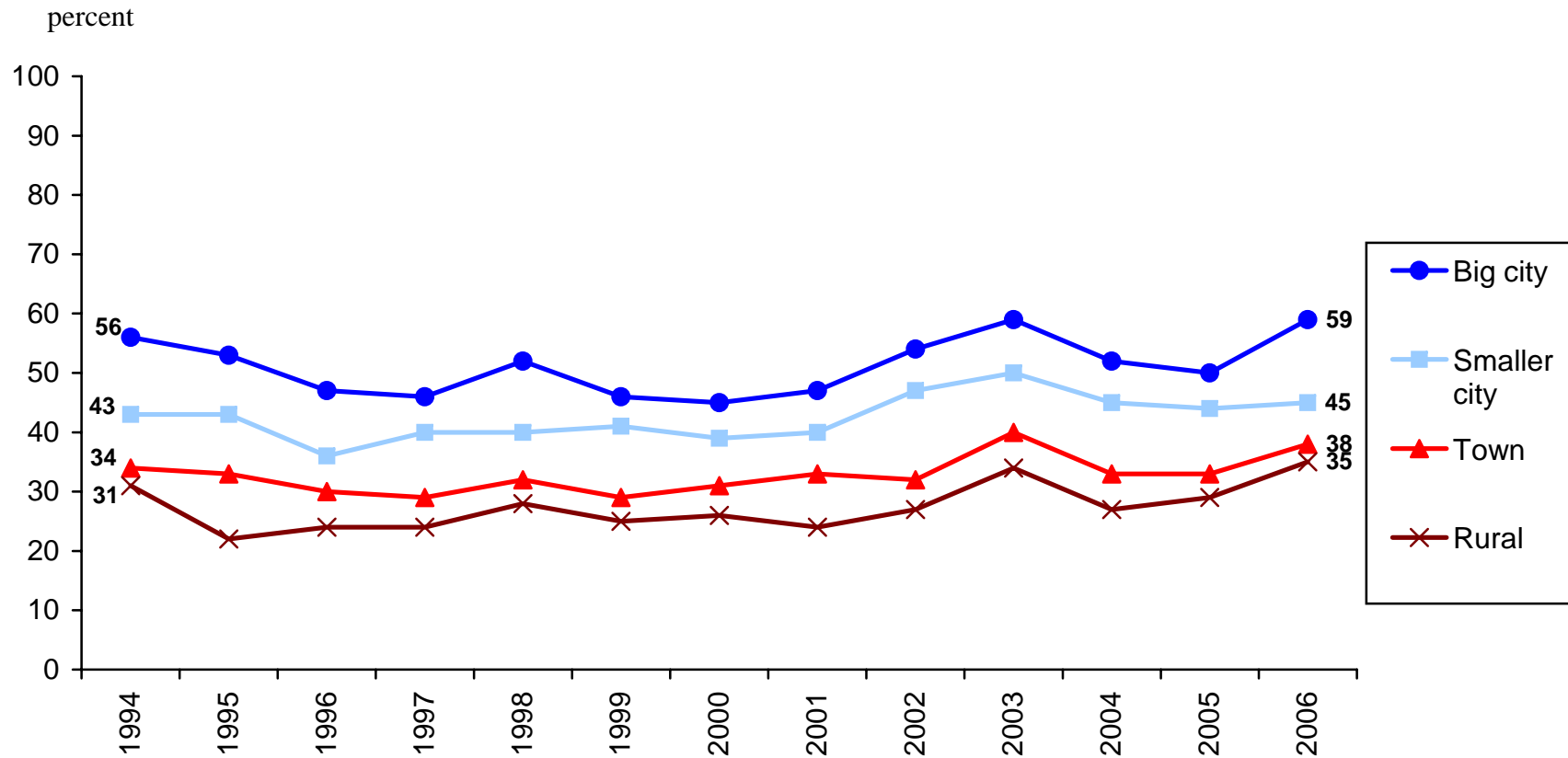
Percent in Favor of Swedish Membership in the European Union among Citizens and Non-Citizens 1994-2006



Data: The annual nationwide SOM-survey, SOM-Institute, Göteborg University, Sweden.

Principal investigators: Sören Holmberg, phone +4631 7861227, e-mail: soren.holmberg@pol.gu.se; Lennart Weibull, phone +46 31 786 12 18, e-mail: lennart.weibull@jmg.gu.se. All data processed by Rudolf Antoni.

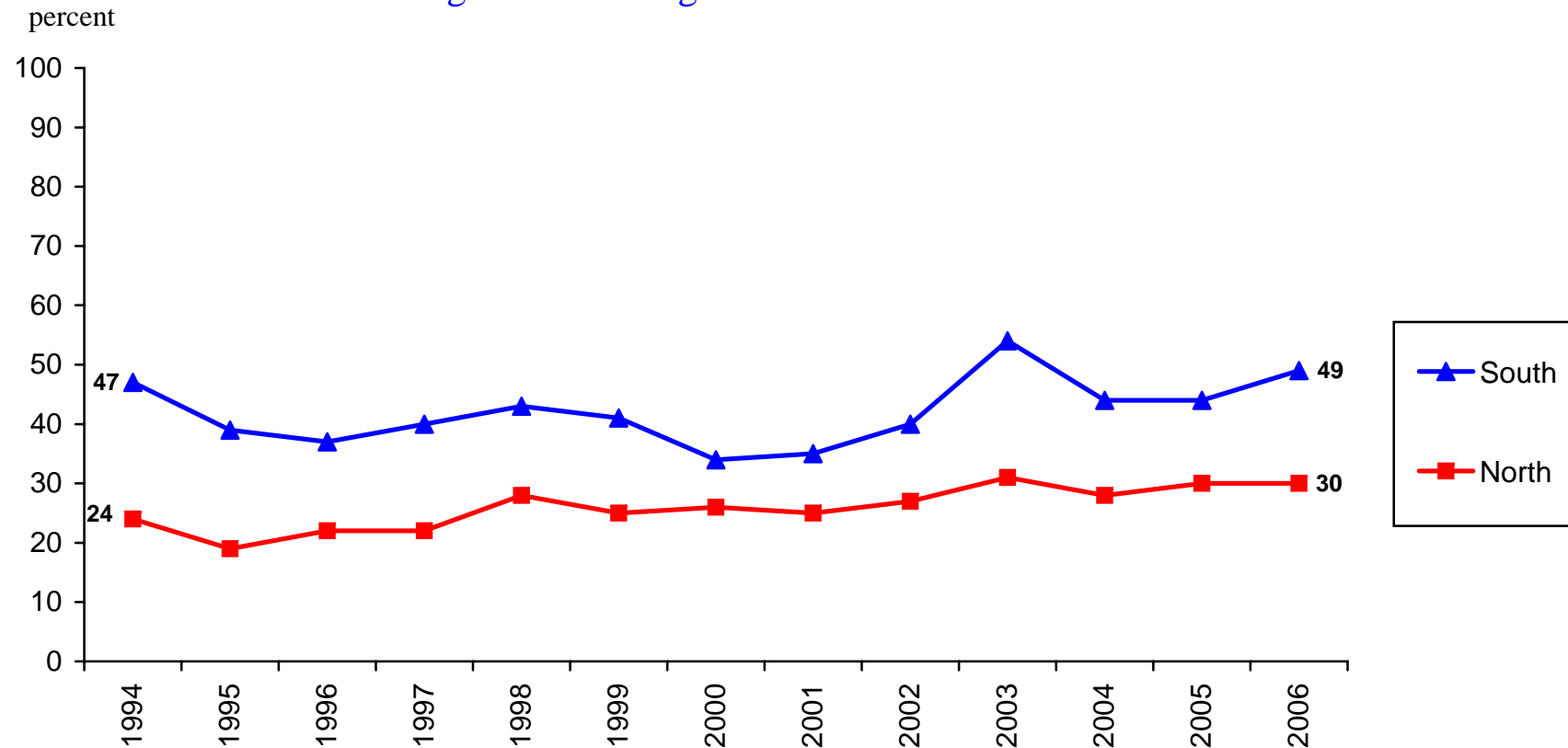
Percent in Favor of Swedish Membership in the European Union among Swedes living in Different Types of Areas 1994-2006



Data: The annual nationwide SOM-survey, SOM-Institute, Göteborg University, Sweden.

Principal investigators: Sören Holmberg, phone +4631 7861227, e-mail: soren.holmberg@pol.gu.se; Lennart Weibull, phone +46 31 786 12 18, e-mail: lennart.weibull@jmg.gu.se. All data processed by Rudolf Antoni.

Percent in Favor of Swedish Membership in the European Union among Swedes living in the North or in the South 1994-2006

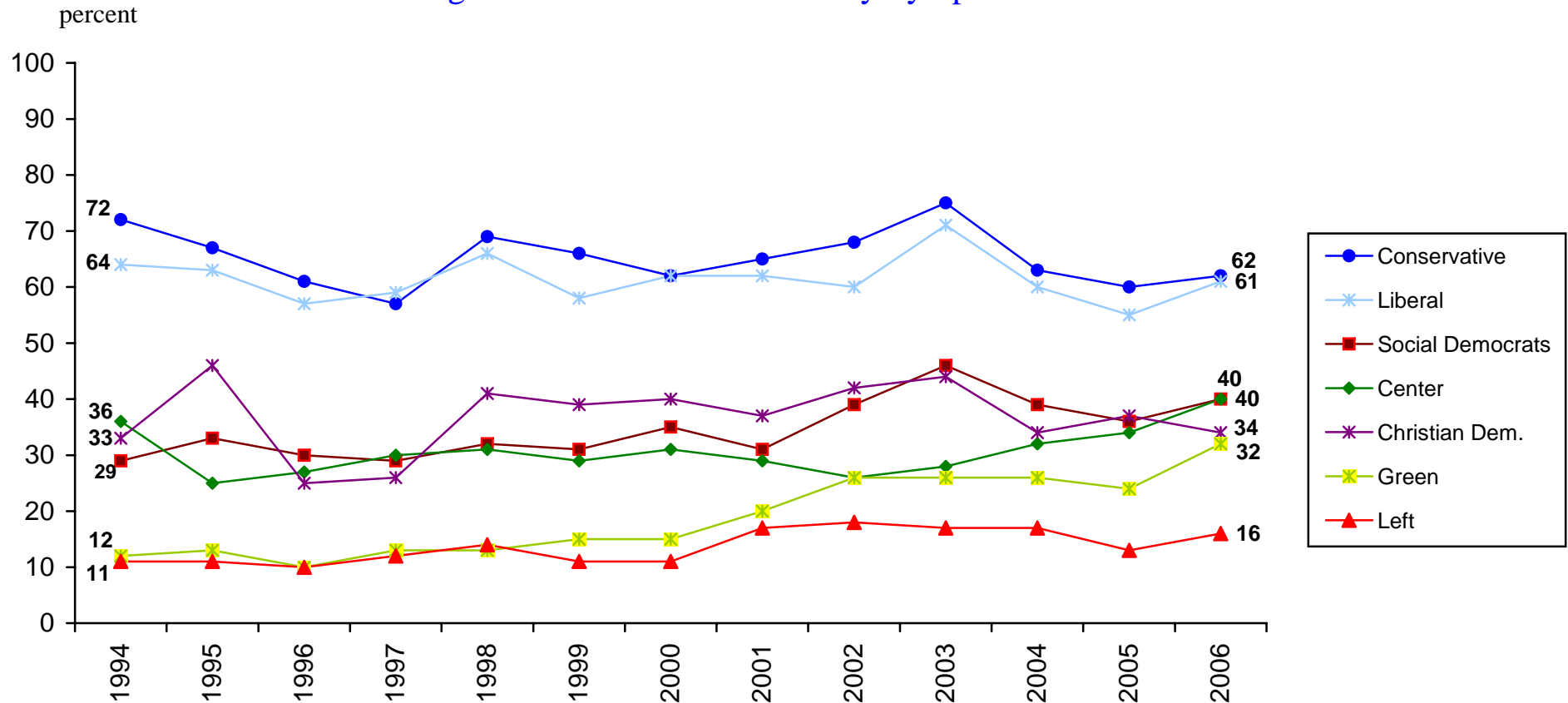


Comment: The South is defined as *Region Skåne* and the North is defined as *Norrland*.

Data: The annual nationwide SOM-survey, SOM-Institute, Göteborg University, Sweden.

Principal investigators: Sören Holmberg, phone +4631 7861227, e-mail: soren.holmberg@pol.gu.se; Lennart Weibull, phone +46 31 786 12 18, e-mail: lennart.weibull@jmg.gu.se. All data processed by Rudolf Antoni.

Percent in Favor of Swedish Membership in the European Union among Swedes with Different Party Sympathies 1994-2006

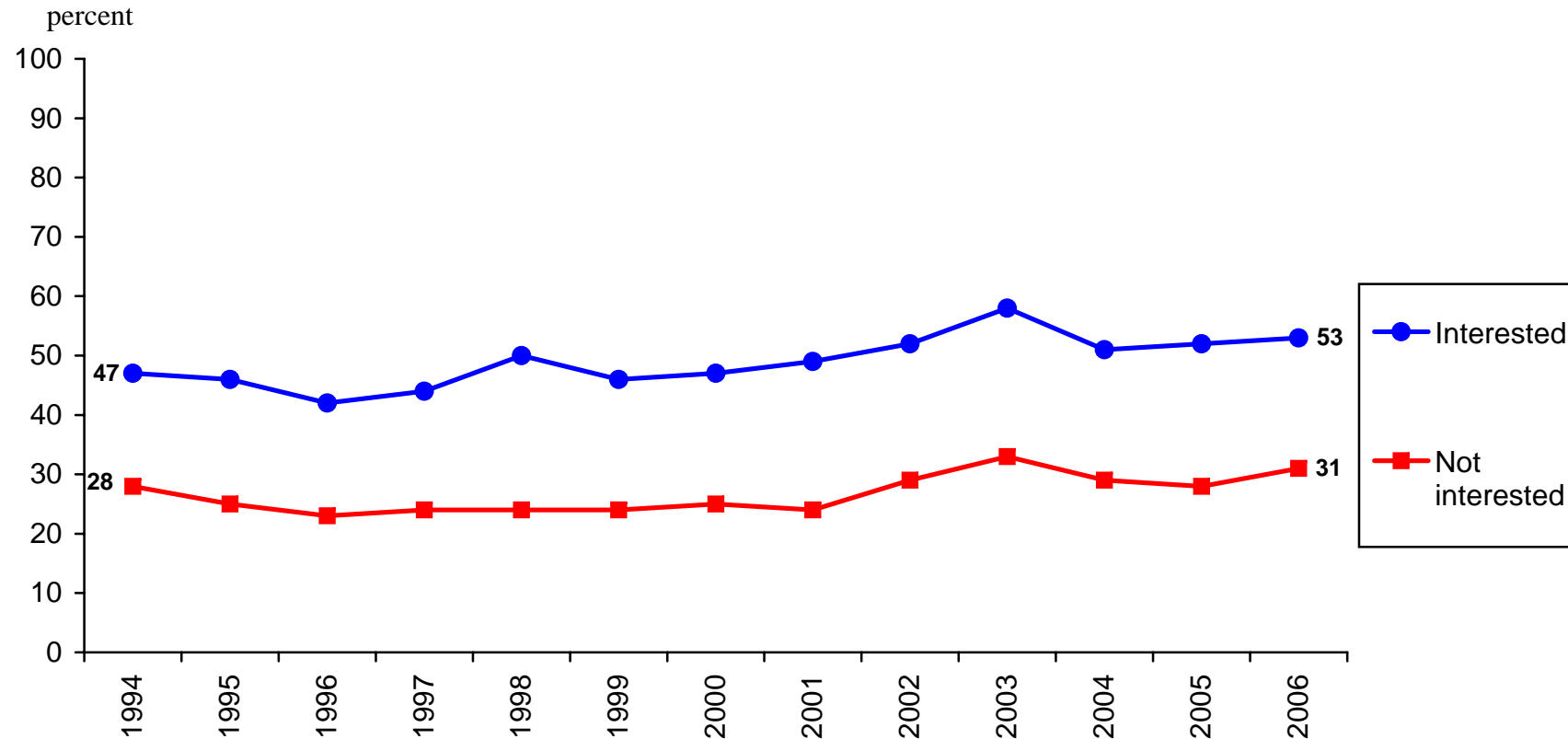


Comment: The result for Sweden Democrats (sd) was 17 percent in 2006.

Data: The annual nationwide SOM-survey, SOM-Institute, Göteborg University, Sweden.

Principal investigators: Sören Holmberg, phone +4631 7861227, e-mail: soren.holmberg@pol.gu.se; Lennart Weibull, phone +46 31 786 12 18, e-mail: lennart.weibull@jmg.gu.se. All data processed by Rudolf Antoni.

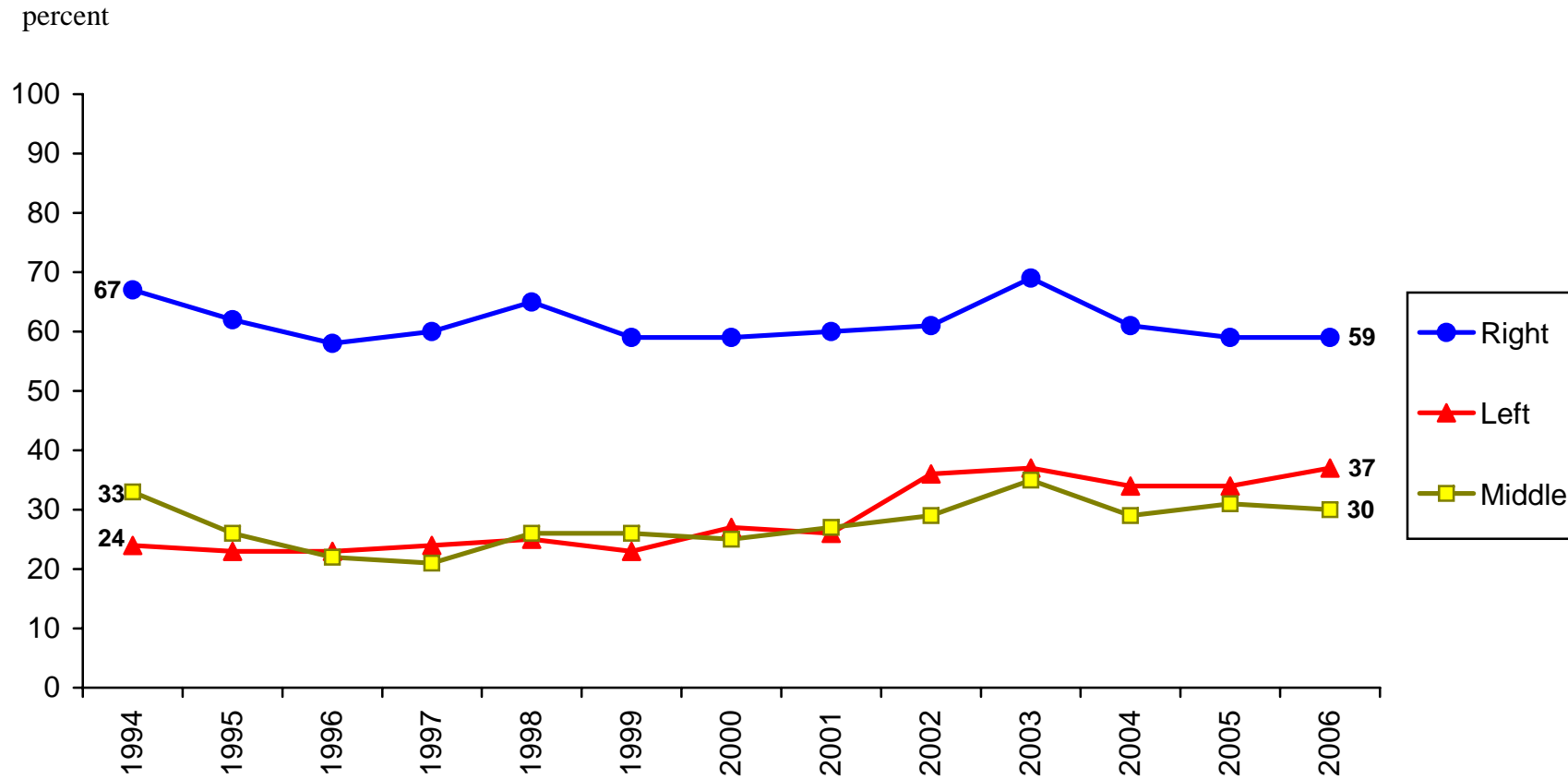
Percent in Favor of Swedish Membership in the European Union among Swedes with Different Degrees of Political Interest 1994-2006



Data: The annual nationwide SOM-survey, SOM-Institute, Göteborg University, Sweden.

Principal investigators: Sören Holmberg, phone +4631 7861227, e-mail: soren.holmberg@pol.gu.se; Lennart Weibull, phone +46 31 786 12 18, e-mail: lennart.weibull@jmg.gu.se. All data processed by Rudolf Antoni.

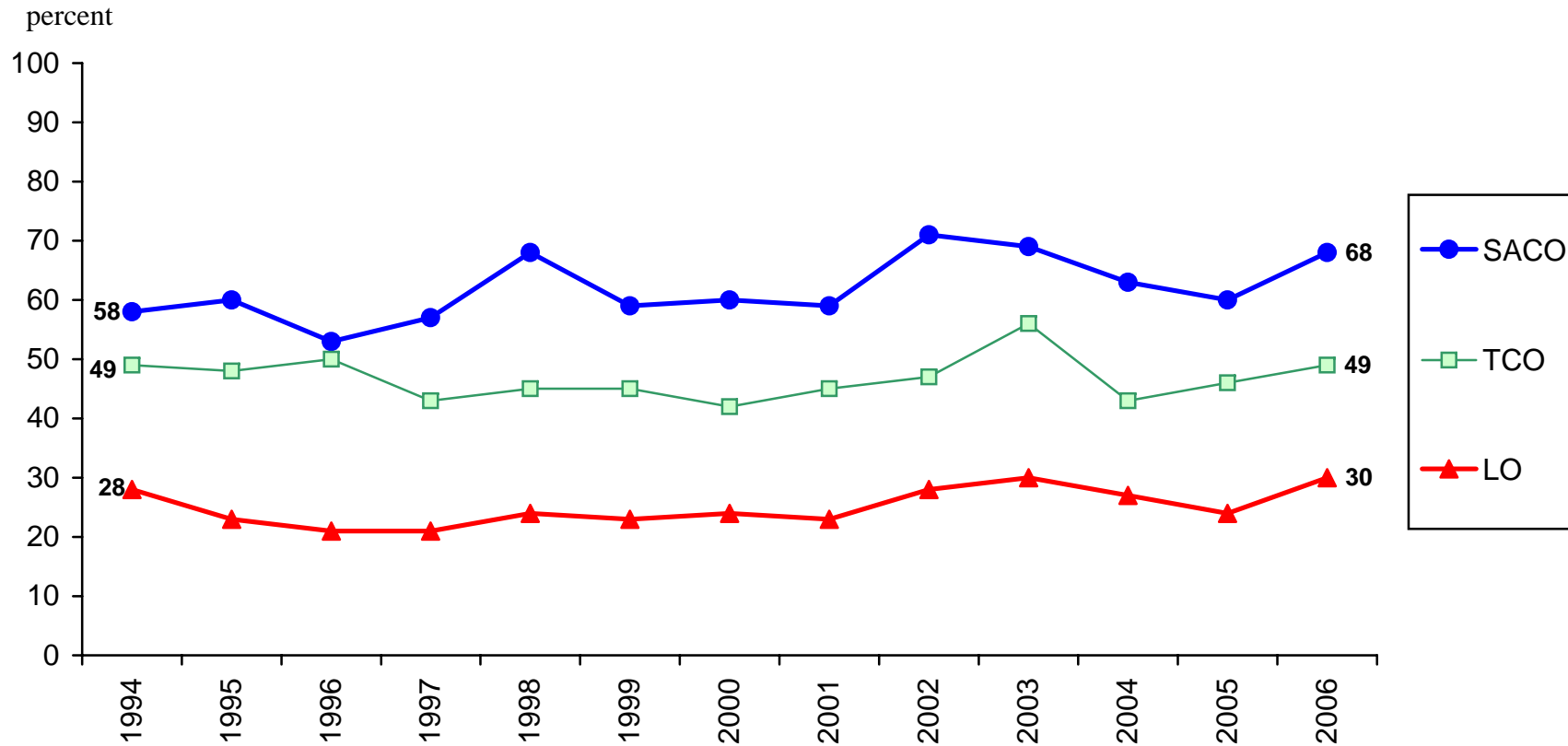
Percent in Favor of Swedish Membership in the European Union among Swedes with Different Ideological Self-Placements 1994-2006



Data: The annual nationwide SOM-survey, SOM-Institute, Göteborg University, Sweden.

Principal investigators: Sören Holmberg, phone +4631 7861227, e-mail: soren.holmberg@pol.gu.se; Lennart Weibull, phone +46 31 786 12 18, e-mail: lennart.weibull@jmg.gu.se. All data processed by Rudolf Antoni.

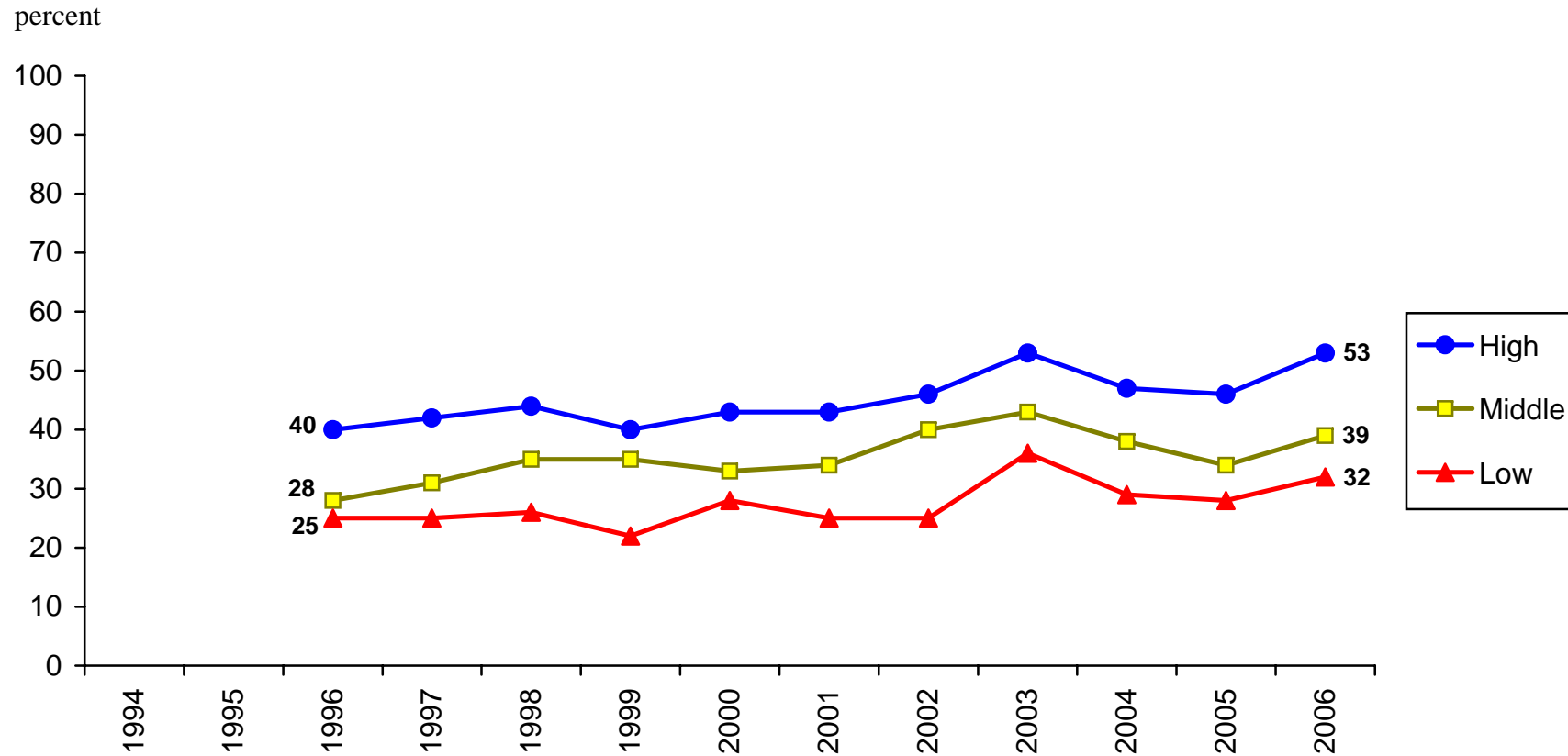
Percent in Favor of Swedish Membership in the European Union among Members of Different Trade Unions 1994-2006



Data: The annual nationwide SOM-survey, SOM-Institute, Göteborg University, Sweden.

Principal investigators: Sören Holmberg, phone +4631 7861227, e-mail: soren.holmberg@pol.gu.se; Lennart Weibull, phone +46 31 786 12 18, e-mail: lennart.weibull@jmg.gu.se. All data processed by Rudolf Antoni.

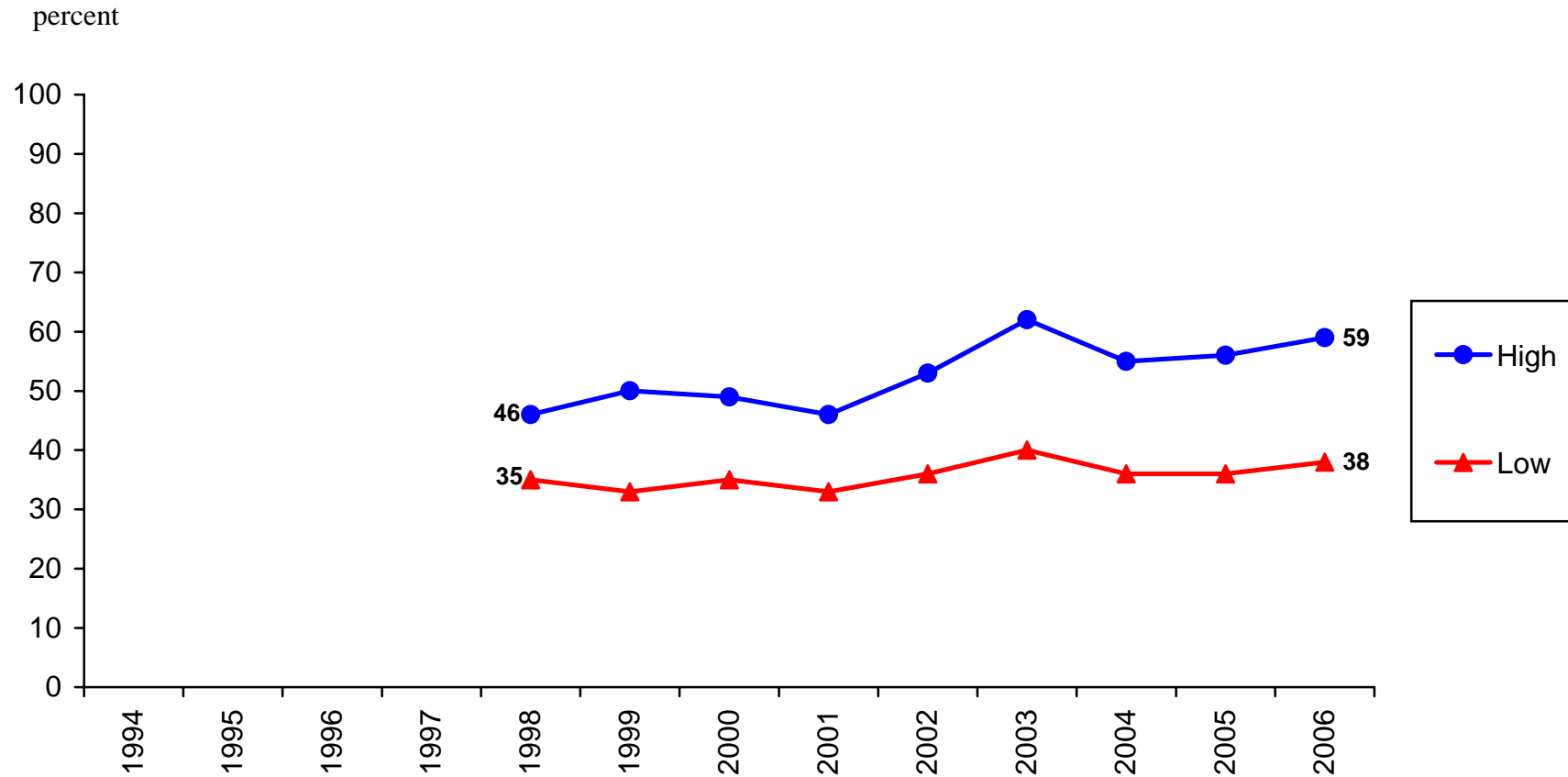
Percent in Favor of Swedish Membership in the European Union among Swedes with Different Degrees of General Trust in Other People 1996-2006



Data: The annual nationwide SOM-survey, SOM-Institute, Göteborg University, Sweden.

Principal investigators: Sören Holmberg, phone +4631 7861227, e-mail: soren.holmberg@pol.gu.se; Lennart Weibull, phone +46 31 786 12 18, e-mail: lennart.weibull@jmg.gu.se. All data processed by Rudolf Antoni.

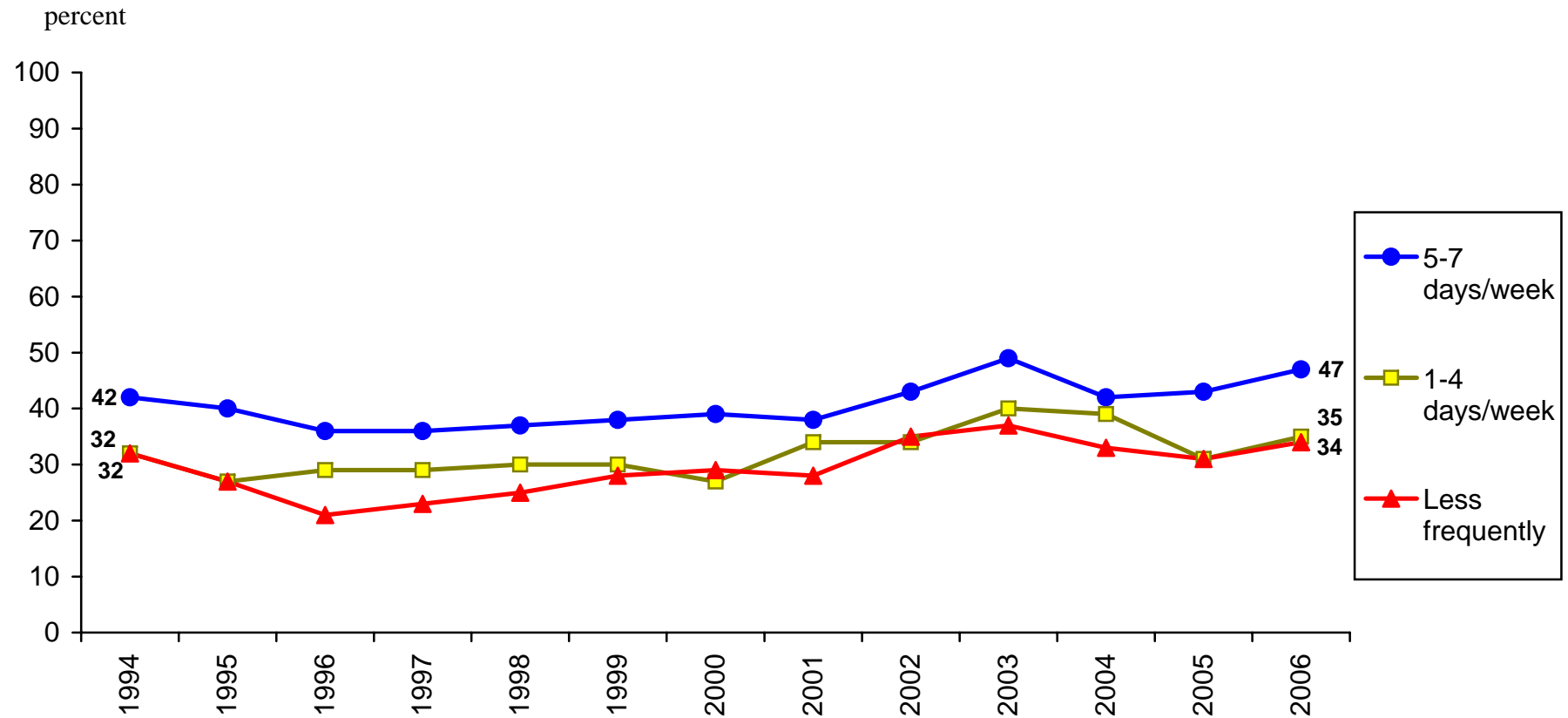
Percent in Favor of Swedish Membership in the European Union among Swedes with Different Degrees of General Trust in Politicians 1996-2006



Data: The annual nationwide SOM-survey, SOM-Institute, Göteborg University, Sweden.

Principal investigators: Sören Holmberg, phone +4631 7861227, e-mail: soren.holmberg@pol.gu.se; Lennart Weibull, phone +46 31 786 12 18, e-mail: lennart.weibull@jmg.gu.se. All data processed by Rudolf Antoni.

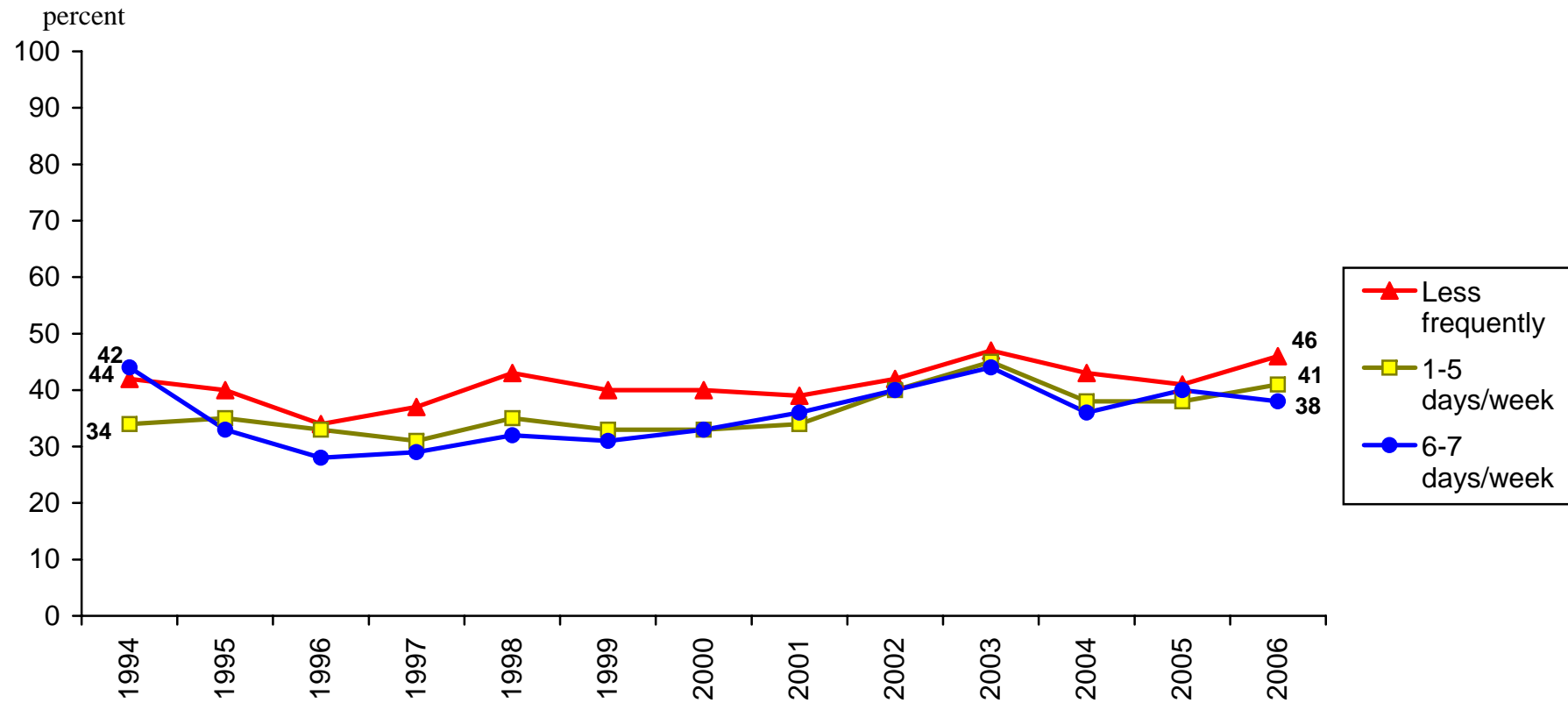
Percent in Favor of Swedish Membership in the European Union among Morning Paper Readers 1994-2006



Data: The annual nationwide SOM-survey, SOM-Institute, Göteborg University, Sweden.

Principal investigators: Sören Holmberg, phone +4631 7861227, e-mail: soren.holmberg@pol.gu.se; Lennart Weibull, phone +46 31 786 12 18, e-mail: lennart.weibull@jmg.gu.se. All data processed by Rudolf Antoni.

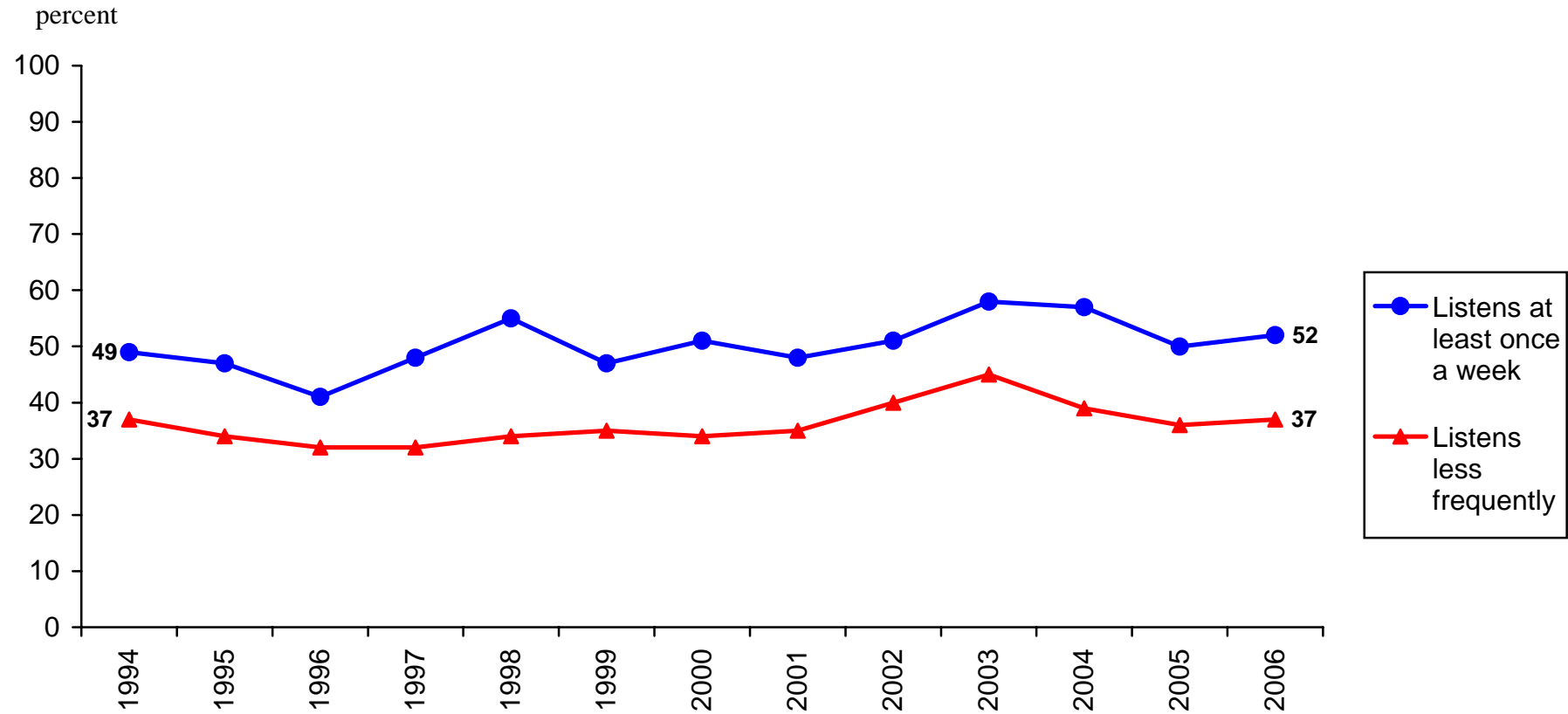
Percent in Favor of Swedish Membership in the European Union among Evening Paper Readers 1994-2006



Data: The annual nationwide SOM-survey, SOM-Institute, Göteborg University, Sweden.

Principal investigators: Sören Holmberg, phone +4631 7861227, e-mail: soren.holmberg@pol.gu.se; Lennart Weibull, phone +46 31 786 12 18, e-mail: lennart.weibull@jmg.gu.se. All data processed by Rudolf Antoni.

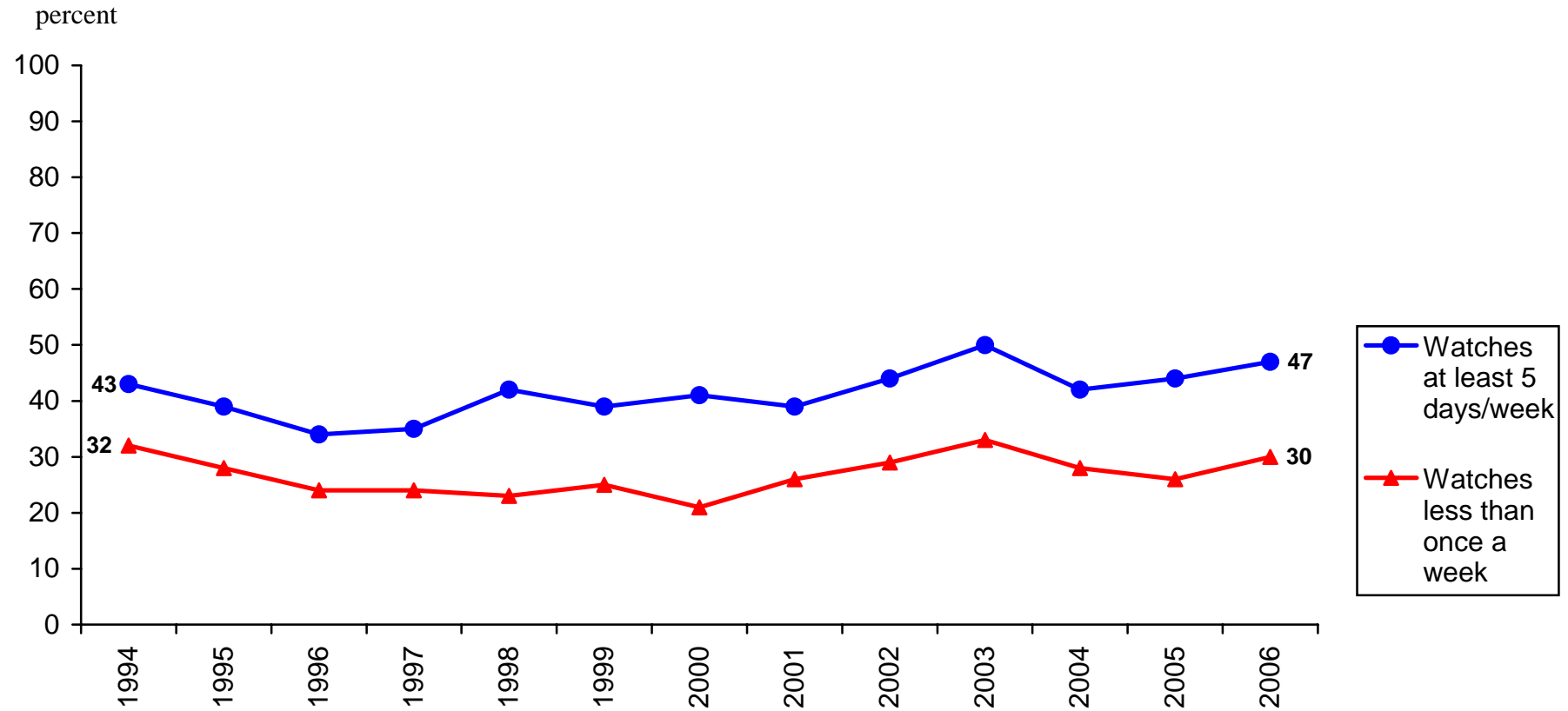
Percent in Favor of Swedish Membership in the European Union among Listeners to Public Service Radio P1 1994-2006



Data: The annual nationwide SOM-survey, SOM-Institute, Göteborg University, Sweden.

Principal investigators: Sören Holmberg, phone +4631 7861227, e-mail: soren.holmberg@pol.gu.se; Lennart Weibull, phone +46 31 786 12 18, e-mail: lennart.weibull@jmg.gu.se. All data processed by Rudolf Antoni.

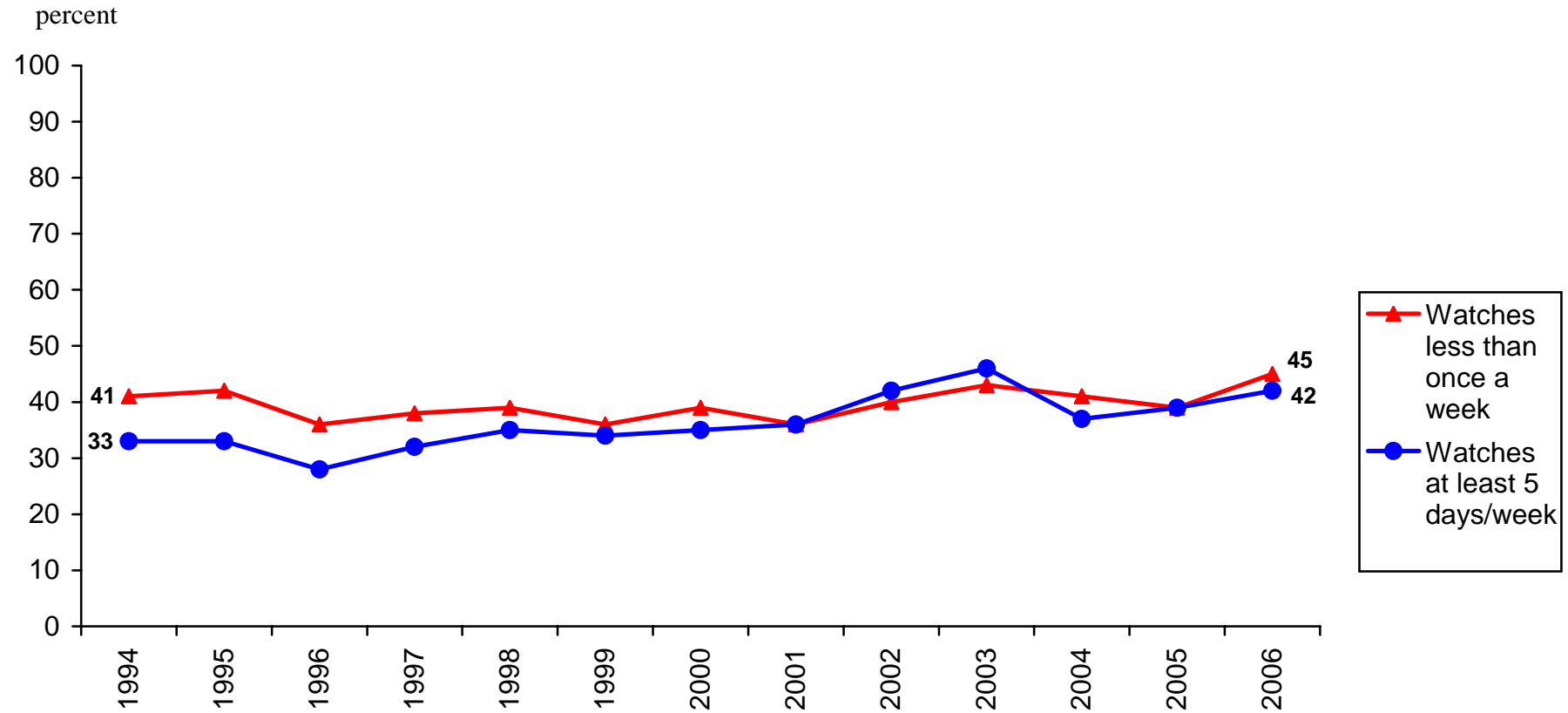
Percent in Favor of Swedish Membership in the European Union among Viewers of Public Service Television News (SVT) 1994-2006



Data: The annual nationwide SOM-survey, SOM-Institute, Göteborg University, Sweden.

Principal investigators: Sören Holmberg, phone +4631 7861227, e-mail: soren.holmberg@pol.gu.se; Lennart Weibull, phone +46 31 786 12 18, e-mail: lennart.weibull@jmg.gu.se. All data processed by Rudolf Antoni.

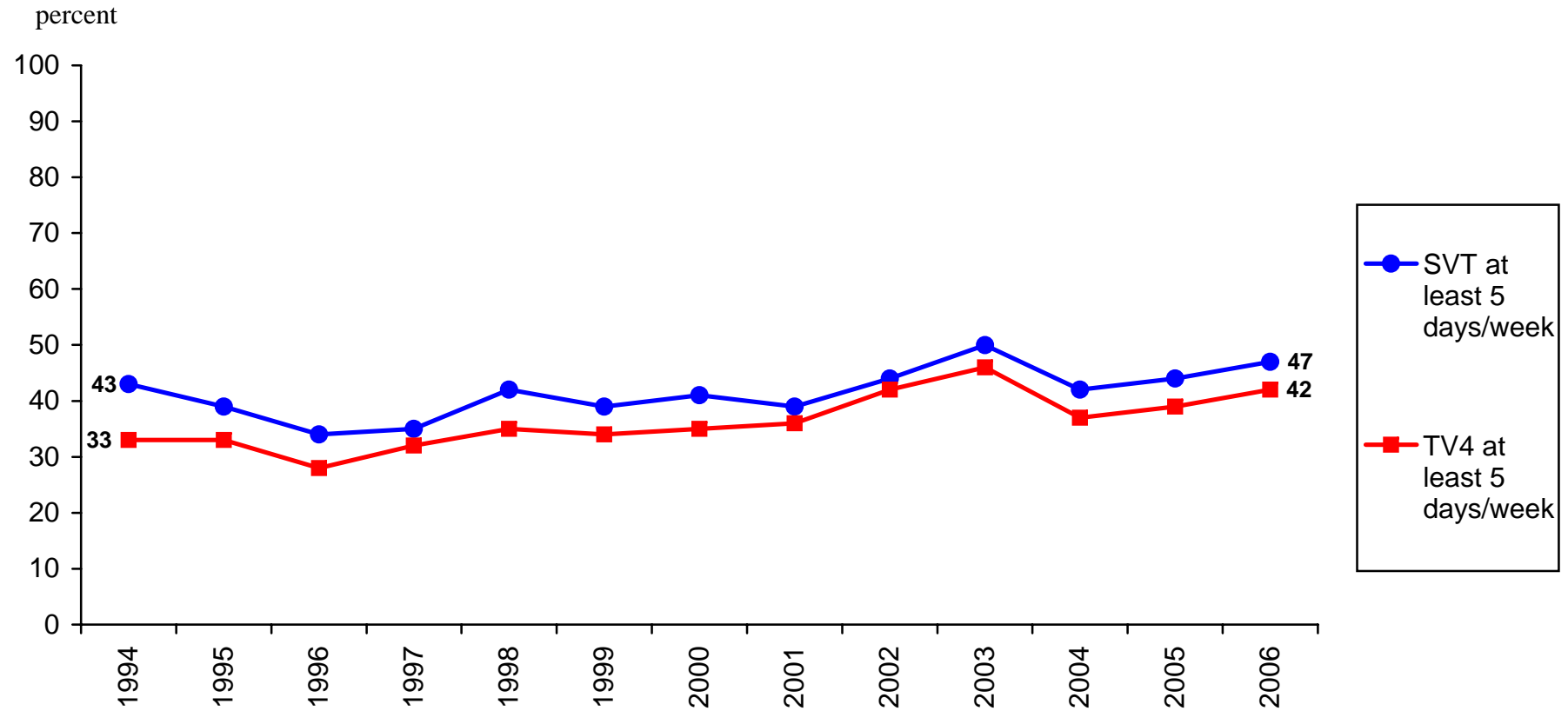
Percent in Favor of Swedish Membership in the European Union among Viewers of Commercial Television News (TV4) 1994-2006



Data: The annual nationwide SOM-survey, SOM-Institute, Göteborg University, Sweden.

Principal investigators: Sören Holmberg, phone +4631 7861227, e-mail: soren.holmberg@pol.gu.se; Lennart Weibull, phone +46 31 786 12 18, e-mail: lennart.weibull@jmg.gu.se. All data processed by Rudolf Antoni.

Percent in Favor of Swedish Membership in the European Union among Viewers of Television News on SVT and TV4 1994-2006



Data: The annual nationwide SOM-survey, SOM-Institute, Göteborg University, Sweden.

Principal investigators: Sören Holmberg, phone +4631 7861227, e-mail: soren.holmberg@pol.gu.se; Lennart Weibull, phone +46 31 786 12 18, e-mail: lennart.weibull@jmg.gu.se. All data processed by Rudolf Antoni.

The SOM-Institute
Göteborg University
Box 710
SE 405 30 Göteborg
Sweden

www.som.gu.se

soren.holmberg@pol.gu.se
lennart.weibull@jmg.gu.se
rudolf.antoni@som.gu.se